

# Annual Report 2021



Foundation for International  
Cancer Research

# Annual Report 2021

Editorial	4
Foundation Establishment	6
Foundation Board	10
Coordinating Center	12
Key Figures	14
Trials Activities	16
Meetings	28
Awards	30
Publications	32
Farewell	36
Events	38
Annual Financial Statement	44
Thank you	46
Donors	48
Company Information	49



# Dear readers

We did it!

On July 1<sup>st</sup>, 2021, **ETOP IBCSG Partners Foundation** was established.

The merger of the two foundations, ETOP (European Thoracic Oncology Platform) and IBCSG (International Breast Cancer Study Group) was officially certified with the signatures of Professor Rolf A. Stahel, Solange Peters, Stefan Aebi and Anita Hiltbrunner.

IBCSG was founded in 1977 as the “Ludwig Breast Cancer Study-Group”. When the Ludwig Institute of Cancer Research decided to focus on laboratory research in 1985, the group was renamed and restructured to: The International Breast Cancer Study Group (IBCSG), which is known for its leading clinical and translational research in breast cancer.

ETOP, founded in 2009, has become one of the leading European organizations dedicated to international clinical and translational research in the field of thoracic malignancies.

The merger to ETOP IBCSG Partners Foundation thus brings together two highly recognized, co-equal innovators in clinical and translational research who will continue their pioneering, scientific research in thoracic and breast cancer. In the future, it is also planned to be open to conducting and supporting international clinical research of other cancer types.



The merger will give the ETOP IBCSG Partners Foundation a global reach to collaborate on projects in Europe, North and South America, Asia, Africa and Australia, strengthening its position as an international academic research organization. It will also benefit from the expertise of the Coordinating Center in Berne and from the collaboration with the Frontier Science Foundation in Greece and the USA.

We look forward to this new journey together with you, and sincerely thank you for your trust and support.

Prof. Dr. med. Rolf A. Stahel  
President of the Foundation Board  
ETOP IBCSG Partners Foundation

# Establishing the ETOP IBCSG Partners Foundation

The ETOP IBCSG Partners Foundation was officially established on July 1<sup>st</sup>, 2021.

On the morning of October 26, 2021, the merger agreement was signed at the Coordination Center by Rolf Stahel, Solange Peters, Stefan Aebi and Anita Hiltbrunner.

The merger of the two foundations was meticulously planned and prepared. While the influence and recognition of both ETOP and IBCSG foundations was already substantial, the merger further strengthens them as a unit, increases their reach and allows for a bundling of competencies. The ETOP IBCSG Partners Foundation marks the way forward for global clinical and translational research.

The registration in the commercial registry took place on March 4, 2022, and the new foundation was created “de jure”.

To visualize the new foundation, a new, modern and confident identity was created, which shall reflect the merger and the common values of the new foundation.

The requirements for the new branding were quite demanding. It should be clearly visible that two co-equal partners were joining forces. Through a harmonious but powerful imagery, human beings should be in the forefront. The purpose of the foundation, namely cancer research at the highest level, should also be reflected in the logo. And last but not least, a color recognition was absolutely desired. Thus, in a creative and cooperative process, the new corporate identity and logo were created.



The visual element of the logo should symbolically show our joint research activities and the colored lines represent the fusion of the two foundations (blue: ETOP, orange-red: IBCSG). The typeface is modern, contemporary and confident.

This annual report has already been published in the new “look & feel” and can be read in either German or English – by simply turning it over.





Handelsregisteramt des Kantons Bern

Firmennummer	Rechtsnatur	Eintragung	Löschung	Übertrag CH-038.7.089.195-9 vor:	1
CHE-474.757.747	Stiftung	04.03.2022		auf:	

Aktuelle Eintragungen

Ei	Lö	Name	Ref	Sitz
1		ETOP IBCSG Partners Foundation	1	Bern
Ei	Lö	Aufsichtsbehörde	Ei	Adresse
			1	Effingerstrasse 40 3008 Bern
Ei	Lö	Zweck	Ei	weitere Adressen
1		Zweck der Stiftung ist der wissenschaftliche Austausch und die Förderung der Krebsforschung, insbesondere die Durchführung und Förderung von Studien, namentlich aber nicht nur, auf dem Gebiet des Thorax- und Brustkrebses. Die Förderung ist geographisch nicht beschränkt. Die Stiftung ist nicht gewinnorientiert und verfolgt keine Erwerbszwecke. Sie ist politisch und konfessionell neutral. Die Stiftung kann im Rahmen ihres Zwecks alle zulässigen Massnahmen im In- und Ausland vornehmen, insbesondere andere juristische Personen errichten, Zweigstellen oder Niederlassungen begründen, Grundstücke erwerben, halten, verkaufen oder mieten, mit anderen Stiftungen fusionieren, die Vermögen anderer juristischer Personen übernehmen, mit anderen juristischen Personen kooperieren oder sie verwalten.		
Ei	Lö	Bemerkungen, Angaben betreffend Übernahme von Aktiven und Passiven	Ref	Urkundennummer
1		Fusion: Die Stiftung entsteht aus der Kombinationsfusion der Stiftung "International Breast Cancer Study Group (IBCSG)", in Bern (CHE-111.702.874), und der Stiftung "European Thoracic Oncology Platform (ETOP)", in Bern (CHE-114.983.335), gemäss Fusionsvertrag vom 26.10.2021, Bilanzen per 30.06.2021 und Verfügung der Aufsichtsbehörde vom 26.01.2022. Aktiven von CHF 1'190'142.51 und Fremdkapital von CHF 9'231'035.04 der Stiftung "International Breast Cancer Study Group (IBCSG)" sowie Aktiven von CHF 16'779'945.50 und Fremdkapital von CHF 14'300'485.90 der Stiftung "European Thoracic Oncology Platform (ETOP)" gehen auf die Stiftung über.	1	26.10.2021



Ref	TR-Nr	TR-Datum	SHAB	SHAB-Dat.	Seite / Id	Ref	TR-Nr	TR-Datum	SHAB	SHAB-Dat.	Seite / Id
1	3462	04.03.2022	48	09.03.2022	1005422984						

Ei	An	Lö	Personangaben	Funktion	Zeichnungsart
1			Stahel, Rolf Arno, von Zürich, in Herlisberg	Präsident des Stiftungsrates	Kollektivunterschrift zu zweien
1			Aebi, Stefan Paul, von Fuluens, in Kiez	Mitglied des Stiftungsrates	Kollektivunterschrift zu zweien
1			Peters, Solange, von Ligneville, in Lausanne	Mitglied des Stiftungsrates	Kollektivunterschrift zu zweien
1			Baak, Paul, niederländischer Staatsangehöriger, in Amsterdam (NL)	Mitglied des Stiftungsrates	ohne Zeichnungsberechtigung
1			Colocini, Marco Angelo Oscar, italienischer Staatsangehöriger, in Mailand (IT)	Mitglied des Stiftungsrates	ohne Zeichnungsberechtigung
1			Gelber, Richard David, amerikanischer Staatsangehöriger, in Boston (US)	Mitglied des Stiftungsrates	ohne Zeichnungsberechtigung
1			McGregor, Keith Haxson, britischer Staatsangehöriger, in Lugano	Mitglied des Stiftungsrates	ohne Zeichnungsberechtigung
1			Papal, Sarjajkumar Bhatkai, britischer Staatsangehöriger, in London (GB)	Mitglied des Stiftungsrates	ohne Zeichnungsberechtigung
1			Rosell Costa, Rafael, spanischer Staatsangehöriger, in Barcelona (ES)	Mitglied des Stiftungsrates	ohne Zeichnungsberechtigung
1			Sherrine Mum-Hareli, Lö, australische Staatsangehörige, in Melbourne (AU)	Mitglied des Stiftungsrates	ohne Zeichnungsberechtigung
1			Hiltbrunner-Hänggärtner, Anita, von Wyssachen, in Spiegel b. Bern (Köniz)	Direktorin	Kollektivunterschrift zu zweien
1			KPMG AG (CHE-106.084.891), in Zürich	Revisionsstelle	Kollektivunterschrift zu zweien
1			Roschitzki-Voser, Heidi, von Neuenhof, in Emmethalden		

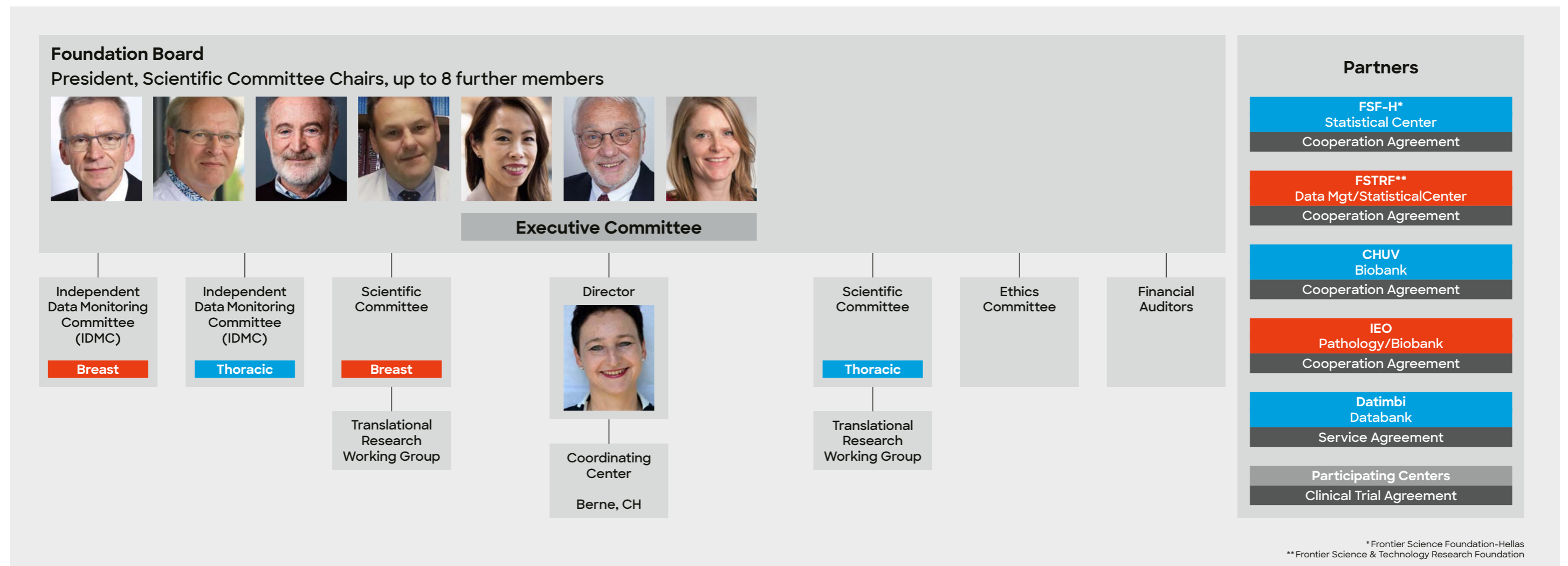
Ostermondtag, 09.03.2022 08:04

Fortsetzung auf der folgenden Seite



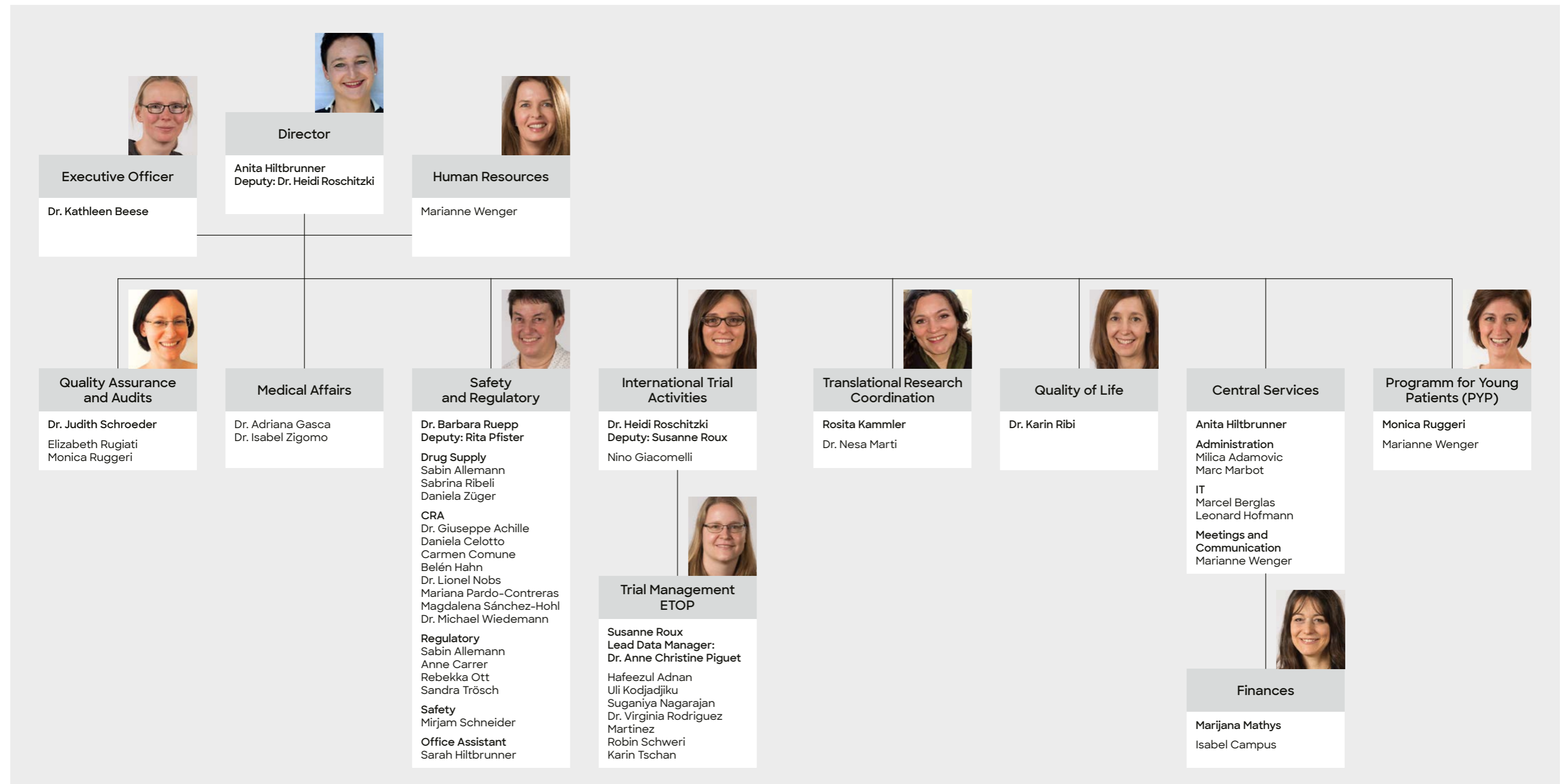
# The Foundation Board

The Foundation Board is the governing body of the ETOP IBCSG Foundation. The Foundation Board members define the vision and values and determine the forward-looking strategy and creative platform to enable the most cutting-edge scientific research, trials and projects.



# The Coordinating Center

The coordinating center in Bern is the headquarters of the ETOP IBCSG Partners Foundation. The team is responsible for the overall coordination as well as specialized tasks. The newly established foundation enables synergies, the expansion of competencies and sustainability.



# Key Figures in 2021

# 344

## Recruited Patients 2021

ETOP IBCSG sponsored: ETOP 169, IBCSG 148  
Non-ETOP IBCSG sponsored: ETOP 0, IBCSG 27



# 45

Coworker Coordinating Center



# 34

## Participating countries in ongoing ETOP IBCSG trials

ETOP 14, IBCSG 33



# 4

## Trials launched in 2021

ETOP IBCSG sponsored: ETOP 1, IBCSG 0  
Non-ETOP IBCSG sponsored: ETOP 0, IBCSG 3

# 13

## Open trials, open to recruitment

ETOP IBCSG sponsored: ETOP 3, IBCSG 2  
Non-ETOP IBCSG sponsored: ETOP 1, IBCSG 7

# 15

## Open trials, in follow-up

ETOP IBCSG sponsored: ETOP 2, IBCSG 7  
Non-ETOP IBCSG sponsored: ETOP 1, IBCSG 5

# 27

## TR projects ongoing

ETOP 14, IBCSG 13



# 17

## Publications

ETOP 3, IBCSG 14  
cumulative: ETOP 24, IBCSG 407

# Current IBCSG Studies with CDK Inhibitors

The human body is made up of billions of cells that form our body tissues, organs and bones. However, after a certain period of time, our cells age and ultimately die. Cell division ensures that new cells are created to take their place.

Cell division in our body is precisely regulated. Special molecules called cyclin-dependent kinases (CDKs) are responsible for the control of cell division.

Cancer cells are characterized by uncontrolled cell division. Dysfunction of CDKs plays a role in a number of types of cancer, in particular hormone receptor-positive metastatic breast cancer. The development of potent and highly selective inhibitors of these CDKs has significantly

improved the treatment of breast cancer. Several clinical trials have shown the efficacy of such CDK inhibitors named palbociclib, abemaciclib or ribociclib in combination with a hormonal therapy for the treatment of hormone receptor-positive metastatic breast cancer.

Based on these positive results, the IBCSG has designed three clinical trials to evaluate the effect of the CDK inhibitor palbociclib for the treatment of hormone receptor-positive breast cancer.

## IBCSG 53-14 PYTHIA

In the IBCSG 53-14 PYTHIA trial, the CDK inhibitor palbociclib was used together with fulvestrant (fulvestrant belongs to the group of estrogen blockers. Estrogens may be linked to breast cancer growth) in patients with hormone receptor-positive/HER2-negative metastatic breast cancer who have received prior treatment for their disease.

The main objective of the PYTHIA study was to evaluate biomarkers, biological characteristics in blood or tissue samples that could provide information about the efficacy of palbociclib in combination with fulvestrant.

The results of the PYTHIA study do indeed point to such a biomarker. This is a molecule called thymidine kinase (TK), and its activity is detectable in the blood. If TK activity in the blood is high, this is associated with an unfavorable prognosis. In the PYTHIA study, patients with high TK activity in the blood appeared to be resistant to therapy with palbociclib and fulvestrant. Although further studies are needed to make a definitive conclusion, TK activity may be a novel biomarker that can provide information on appropriate therapy for these patients.

## IBCSG 59-19 POLAR

The IBCSG 59-19 POLAR trial studies the efficacy of adjuvant palbociclib treatment in combination with hormonal therapy in patients with hormone receptor-positive and HER2-negative isolated local recurrences of breast cancer.

Adjuvant treatment is the term used to describe a therapy that is given after surgical removal of the tumor.

Local or regional recurrence of breast cancer after breast-conserving surgery or breast removal is associated with an increased risk of metastasis and lower survival. Treatment with the CDK inhibitor palbociclib is anticipated to decrease the risk of breast cancer recurrence.

## IBCSG 55-17 TOUCH

The IBCSG 55-17 TOUCH trial assesses the efficacy of palbociclib in comparison to chemotherapy as a neoadjuvant treatment. Neoadjuvant treatment is the term used to describe the therapy given before the planned definitive treatment for a tumor, usually surgery.

Chemotherapy is often associated with significant side effects. Therefore, there is a great demand, especially among older women, for an effective breast cancer treatment that does not require chemotherapy.

The TOUCH study targets older patients with hormone receptor-positive and HER2-positive early breast cancer. Half of the patients will be treated with the CDK inhibitor palbociclib for approximately 4 months prior to surgery. The other half will receive chemotherapy, which is the standard treatment for such patients. During this time, all patients will also be treated with the two drugs trastuzumab and pertuzumab to block the HER2 receptor.

The purpose of the treatment in the TOUCH study is to ensure that patients no longer have any signs of cancer after surgery.

# The latest ETOP-trial USZ-STRIKE: Better treatment of brain metastases

## ETOP 19-21 USZ-STRIKE

Thanks to medical advances, life expectancy has increased substantially for various types of cancer. However, many new drugs show their maximum efficacy primarily outside of the central nervous system and therefore have limited efficacy in treating brain metastases.

As life expectancy increases, so does the risk of developing metastases in the brain or central nervous system.

In many cases, brain metastases lead to a reduction in independence and quality of life, and often also to death. Brain metastases are most commonly found with melanoma, lung cancer, breast cancer, and kidney cancer.

Treating brain metastases is a major challenge. Treatment strategies include neurosurgery, various methods of radiation therapy, and systemic drug therapy. However, the most common form of treatment is radiotherapy.

The optimal timing of radiation therapy is debated among experts. Should brain metastases be treated with radiation immediately after diagnosis to control disease progression? Or should radiation therapy only be initiated after medication has been proven to be ineffective in treating brain metastases? To date, there is no clear answer to this question.

Despite the answer to this question being crucial to patient survival, to date no randomized trials have been conducted to determine the optimal timing of radiotherapy for brain metastases.

The randomized clinical trial ETOP 19-21 USZ-STRIKE seeks to find an answer to this question.

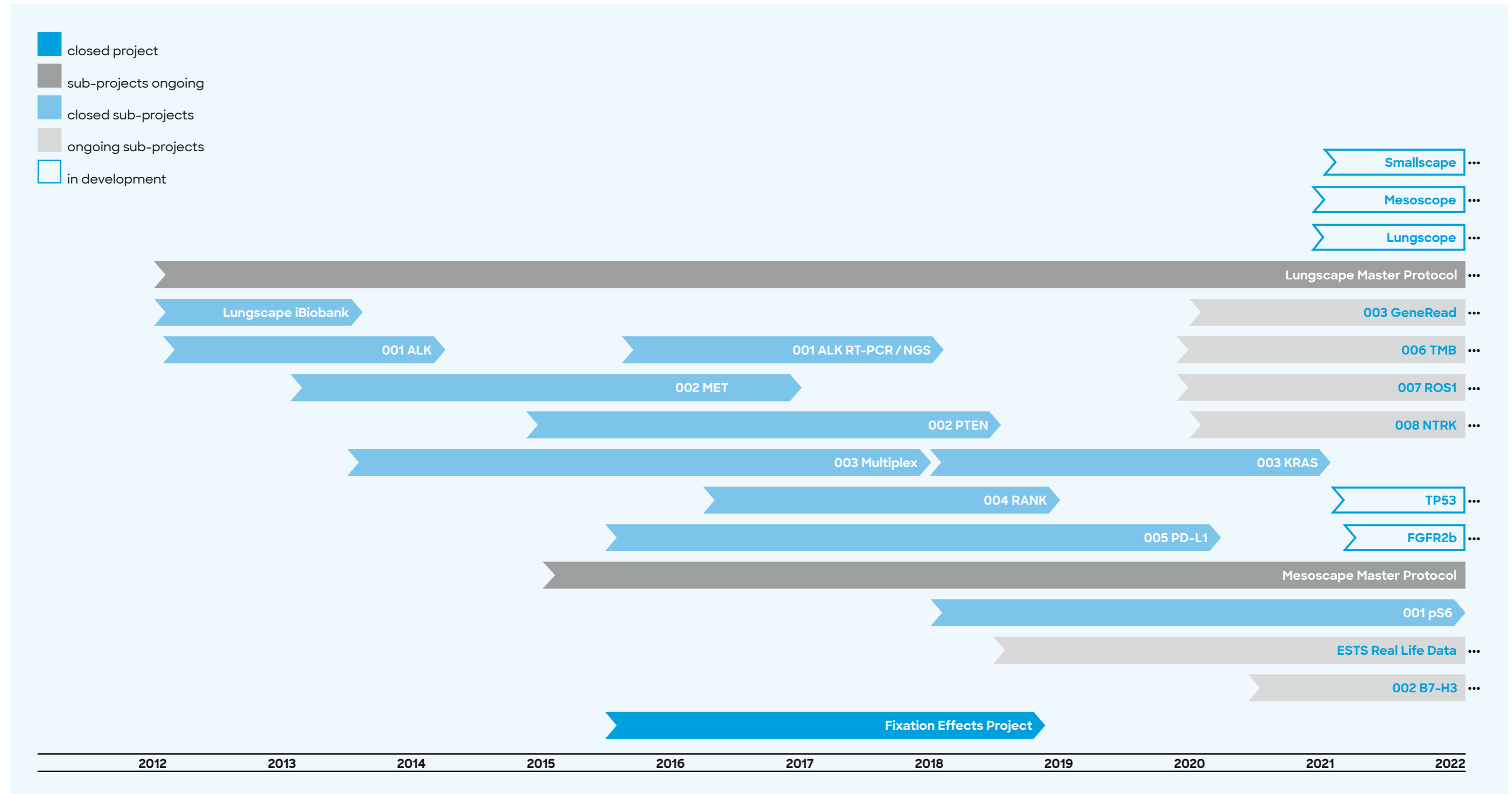
The patients participating in this study have been newly diagnosed with brain metastases deriving from melanoma or non-small cell lung cancer, which have not been formerly treated.

The study was developed by a team of physicians from the University Hospital Zurich (USZ) led by Professors Michael Weller and Rolf Stahel, in collaboration with ETOP IBCSG Partners. Besides the USZ and other Swiss centers, centers in Italy, the United Kingdom and the Netherlands are also taking part in the study.

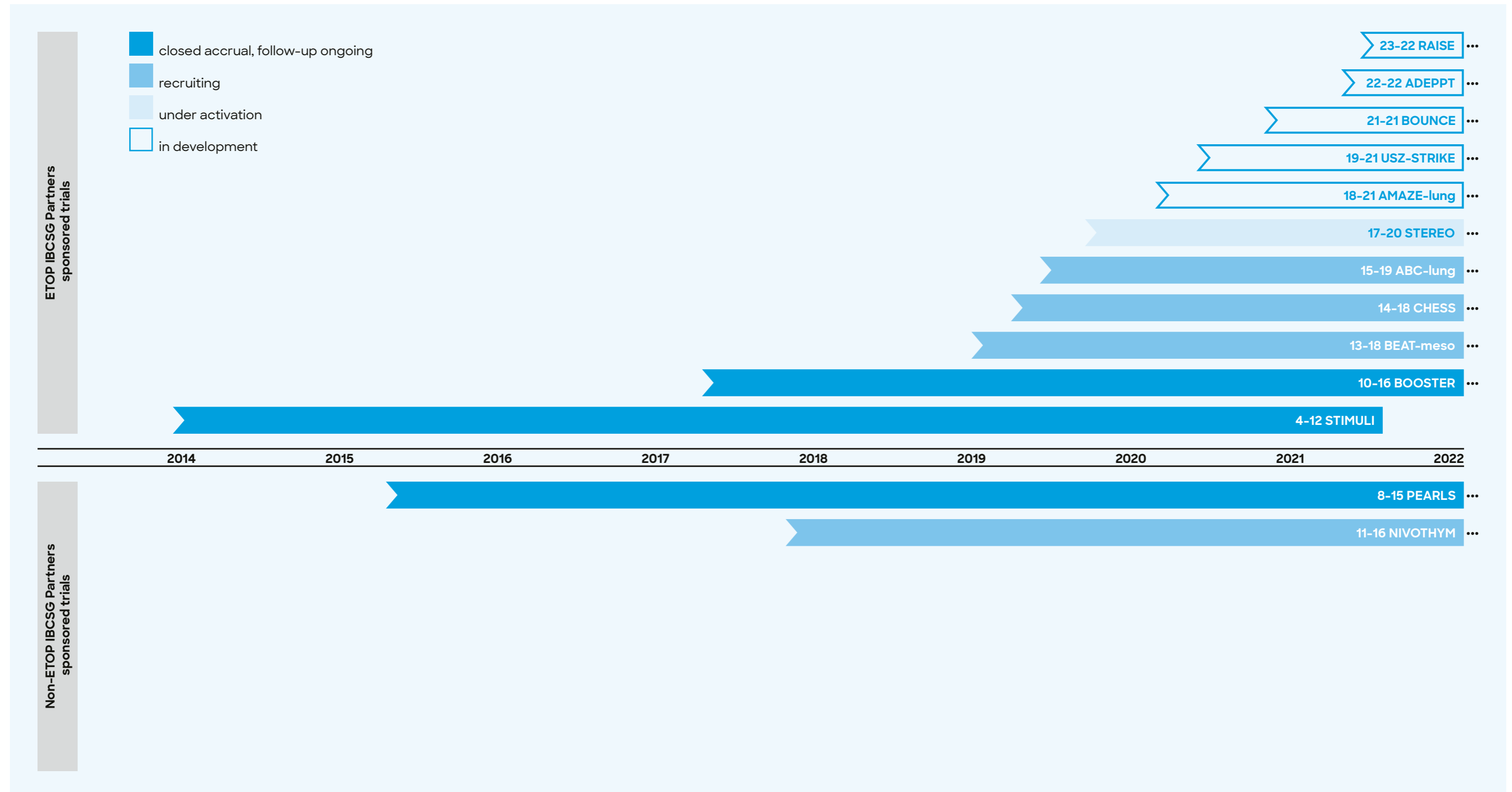
The clinical trial is almost fully funded by donations by the USZ Foundation and its donor partners.



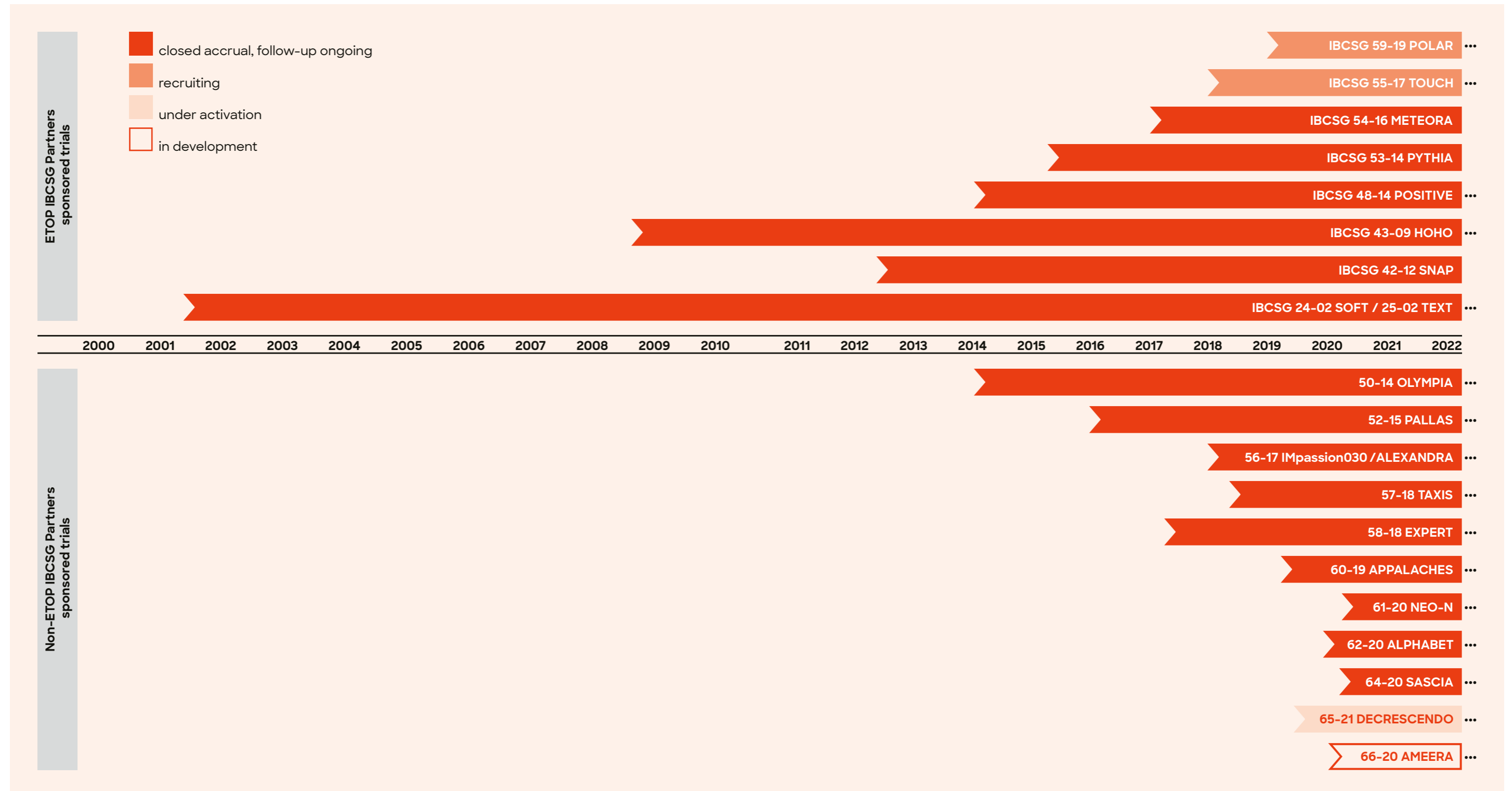
# Ongoing translational research projects



# Ongoing clinical studies on lung cancer



# Ongoing clinical studies on breast cancer





# Virtual IBCSG Annual Meeting

Due to the ongoing difficult times the 44th IBCSG Annual Meeting took place virtually on Sunday, March 21<sup>st</sup>, 2021. Nearly 100 participants took part in the half day event where ongoing trials as well as concepts for new projects and results were presented.

# ETOP Annual Meeting in Barcelona, Spain

The ETOP Annual Meeting 2021 was held from 5–6 November 2021 in Barcelona, Spain. Ongoing projects and trials as well as new ideas and concepts were presented and discussed either during the plenary meeting or in the breakout sessions. More than 90 participants attended the on-site meeting and seized the opportunity to engage in stimulating high-level scientific exchange with other ETOP participants. These lively discussions continued during the coffee breaks and dinner.

# 10<sup>th</sup> ETOP Residential Workshop in Barcelona, Spain

The ETOP Residential Workshops have become a successful tradition. The format of bringing young researchers and experienced faculty together offers a unique opportunity for these young researchers to exchange research ideas and learn from the experts in the field of thoracic oncology.

This year's Workshop was held from 3–5 November 2021 in Barcelona, Spain. Twenty-two young scientists attended the workshop which was led by 14 faculty members - all leading experts in the field of thoracic oncology and statistics. The program focused on current trends in research and cancer care. One of the key elements of these ETOP Residential Workshops is the presentation of the participants own research projects. These excellent presentations were followed by lively discussions chaired by the senior subject matter experts.





# Professor Sherene Loi is awarded two prestigious prizes

Professor Sherene Loi, Medical Oncologist and Head of the Translational Breast Cancer Laboratory at Peter MacCallum Cancer Center is a highly recognized scientist in the field of translating scientific findings into innovative treatments, which improve the survival of breast cancer patients in Australia and around the world. She is also the Co-Chair of the IBCSG Scientific Committee.

## **2021 Frank Fenner Prize for Life Scientist of the Year**

The Prime Minister's Prizes for Science are Australia's most prestigious awards for outstanding achievements in scientific research, research-based innovation, and excellence in science teaching.

Professor Sherene Loi's research has led to the development and implementation of an immune biomarker test for breast cancer, helping patients manage the advanced disease. This biomarker is now part of a routine pathology examination for breast cancer in many countries and is included in the World Health Organization Classification of Tumors: Breast Tumors (also known as the WHO Blue Book on Breast Tumors).

Professor Loi has also made a significant contribution to the first worldwide approval of immunotherapy for patients with the most aggressive type of breast cancer.

## **2021 Australian Academy of Health and Medical Sciences' Jian Zhou Medal**

This annual award is given to up to two individuals who make an impact in translational medical science and is given in honor of cervical cancer vaccine co-inventor Professor Jian Zhou.

Professor Sherene Loi has challenged the dogma that immunotherapy was not possible for breast cancer and this has led to a series of clinical trials which are already changing the lives of her patients.

She was also the first to prove that immune cell infiltration of breast tumor tissue strongly predicts improved survival in some types of breast cancer and she is now leading the development and standardization of this unique biomarker – which has in the meanwhile become a routine procedure in the pathological examination of breast cancer.

**We extend our sincere congratulations to Professor Sherene Loi on these prestigious awards!**

# ETOP Publications

2021

24. Peters S, Danson S, Ejedepang D, Dafni U, Hasan B, Radcliffe H-S, Bustin F, Crequit J, Coate L, Guillot M, Surmont V, Rauch D, Rudzki J, O'Mahony D, Barneto Aranda I, Scherz A, Tsourti Z, Roschitzki-Voser H, Pochesci A, Demonty G, Stahel RA, O'Brien M. Combined, patient-level, analysis of two randomised trials evaluating the addition of denosumab to standard first-line chemotherapy in advanced NSCLC - The ETOP/EORTC SPLENDOUR and AMGEN-249 trials. *Lung Cancer* 2021;161:76-85. doi: 10.1016/j.lungcan.2021.09.002. Epub 2021 September 9. (ETOP 5-12) (Journal Impact Factor 5.705).

23. Finn SP, Addeo A, Dafni U, Thunnissen E, Bubendorf L, Madsen LB, Biernat W, Verbeke E, Hernandez-Losa J, Marchetti A, Cheney R, Warth A, Speel EM, Quinn AM, Monkhorst K, Jantus-Lewintre E, Tischler V, Marti N, Dimopoulou G, Molina-Vila MA, Kammler R, Kerr KM, Peters S, Stahel RA. Prognostic Impact of KRAS G12C Mutation in Patients With NSCLC: Results From the European Thoracic Oncology Platform Lungscape Project. *J Thorac Oncol* 2021;16(6):990-1002. doi: 10.1016/j.jtho.2021.02.016. Epub 2021 March 2. (ETOP Lungscape) (Journal Impact Factor 15.609).

22. Peters S, Felip E, Dafni U, Tufman A, Guckenberger M, Álvarez R, Nadal E, Becker A, Veer H, Pless M, Martinez-Marti A, Lambrecht M, Andratschke N, Tsourti Z, Piguet AC, Roschitzki-Voser H, Gasca-Ruchti A, Vansteenkiste J, Stahel RA, Ruysscher D. Progression-free and overall survival for concurrent nivolumab with standard concurrent chemo-radiotherapy in locally advanced stage IIIA/B NSCLC: Results from the European Thoracic Oncology Platform NICOLAS phase II trial (ETOP 6-14). *J Thorac Oncol* 2021;16(2):278-288. doi: 10.1016/j.jtho.2020.10.129. Epub 2020 November 15. (ETOP 6-14) (Journal Impact Factor 15.609).



“ETOP IBCSG Partners and GECP share the mission and vision of improving lung cancer research in Europe. Clearly our fruitful collaboration contributes to this goal every day”.

Maria Fernández, Director Spanish Lung Cancer Group (GECP)

# IBCSG Publications

407. Gnant M, Dueck AC, Frantal S, Martin M, Burstein HJ, Greil R, Fox P, Wolff AC, Chan A, Winer EP, Pfeiler G, Miller KD, Colleoni M, Suga JM, Rubovsky G, Bliss JM, Mayer IA, Singer CF, Nowecki Z, Hahn O, Thomson J, Wolmark N, Amillano K, Rugo HS, Steger GG, Hernando Fernández de Aránguiz B, Haddad TC, Perelló A, Bellet M, Fohler H, Metzger Filho O, Jallitsch-Halper A, Solomon K, Schurmans C, Theall KP, Lu DR, Tenner K, Fesl C, DeMichele A, Mayer EL, on behalf of the PALLAS groups and investigators. Adjuvant Palbociclib for Early Breast Cancer: The PALLAS Trial Results (ABCSCG-42/AFT-05/BIG-14-03). *J Clin Oncol* 2021;JCO2102554. doi: 10.1200/JCO.21.02554. Epub 2021 Dec 7. (IBCSG 52-15) (Journal Impact Factor 44.544 Supplement).

406. Turner NC, Balmaña J, Poncet C, Goulioti T, Tryfonidis K, Honkoop AH, Zoppoli G, Razis E, Johannsson OT, Colleoni M, Tutt AN, Audeh W, Ignatiadis M, Mailliez A, Trédan O, Musolino A, Vuylsteke P, Juan-Fita MJ, Macpherson IRJ, Kaufman B, Manso L, Goldstein LJ, Ellard SL, Láng I, Jen KY, Adam V, Litière S, Erban J, Cameron DA; BRAVO Steering Committee and the BRAVO Investigators. Niraparib for Advanced Breast Cancer with Germline BRCA1 and BRCA2 Mutations: the EORTC 1307-BCG/BIG5-13/TESARO PR-30-50-10-C BRAVO Study. *Clin Cancer Res* 2021;27(20):5482-5491. doi: 10.1158/1078-0432.CCR-21-0310. Epub 2021 Jul 22. (IBCSG 47-14) (Journal Impact Factor 12.531).

405. Aftimos P, Oliveira M, Irrthum A, Fumagalli D, Sotiriou C, Nili Gal-Yam E, Robson ME, Ndozeng J, Di Leo A, Ciruelos EM, de Azambuja E, Viale G, Scheepers E, Curigliano G, Bliss JM, Reis-Filho JS, Colleoni M, Balic M, Cardoso F, Albanell J, Duhem C, Marreaud S, Romagnoli D, Rojas B, Gombos A, Wildiers H, Guerrero-Zotano A, Hall P, Bonetti A, Larsson KF, Degiorgis M, Khodaverdi S, Greil R, Sverrisdottir A, Paoli M, Seyll E, Loibl S, Linderholm B, Zoppoli G, Davidson NE, Johannsson OT, Bedard PL, Loi S, Knox S, Cameron DA, Harbeck N, Montoya ML, Brandão M, Vingiani A, Caballero C, Hilbers FS, Yates LR, Benelli M, Venet D, Piccart MJ. Genomic and transcriptomic analyses of breast cancer primaries and matched metastases in AURORA, the Breast International Group (BIG) molecular screening initiative. *Cancer Discov* 2021;11(11):2796-2811. doi: 10.1158/2159-8290.CD-20-1647. Epub 2021 Oct 11. (IBCSG 51-14) (Journal Impact Factor 39.397).

404. Weber WP, Matrai Z, Hayoz S, Tausch C, Henke G, Zwahlen DR, Gruber G, Zimmermann F, Seiler S, Maddox C, Ruhstaller T, Muenst S, Ackerknecht M, Kuemmel S, Bjelic-Radisic V, Kurzeder C, Újhelyi M, Vrieling C, Satler R, Meyer I, Becciolini C, Bucher S, Simonson C, Fehr PM, Gabriel N, Maraz R, Sarlos D, Dedes KJ, Leo C, Berclaz G, Dubsky P, Exner R, Fansa H, Hager C, Reisenberger K, Singer CF, Reitsamer R, Reinisch M, Winkler J, Thanh Lam G, Fehr MK, Naydina T, Kohilk M, Clerc K, Ostapenko V, Fitzal F, Nussbaumer R, Maggi N, Schulz A, Markellou P, Lelièvre L, Egle D, Heil J, Knauer M. Tailored axillary surgery in patients with clinically node-positive breast cancer: Pre-planned feasibility substudy of TAXIS (OPBC-03, SAKK 23/16, IBCSG 57-18, ABCSG-53, GBG 101). *Breast* 2021;60:98-110. doi: 10.1016/j.breast.2021.09.004. Epub 2021 Sept 8. (IBCSG 57-18) (Journal Impact Factor 4.380).

403. Jerusalem G, Farah S, Courtois A, Chirgwin J, Aebi S, Karlsson P, Neven P, Hitre E, Graas MP, Simoncini E, Abdi E, Kamby C, Thompson A, Loibl S, Gavilá J, Kuroi K, Marth C, Müller B, O'Reilly S, Gombos A, Ruhstaller T, Burstein HJ, Rabaglio M, Ruepp B, Ribí K, Viale G, Gelber RD, Coates AS, Loi S, Goldhirsch A, Regan\* MM, Colleoni\* M. on behalf of the SOLE Investigators. Continuous vs intermittent extended adjuvant letrozole for breast cancer: Final results of randomized phase 3 SOLE (Study of Letrozole Extension) and SOLE Estrogen Substudy. \*Co-last authors. *Ann Oncol* 2021;32(10):1256-1266. doi: 10.1016/j.annonc.2021.07.017. Epub 2021 Aug 10. (IBCSG 35-07) (Journal Impact Factor 32.976).

402. Partridge AH, Niman SM, Ruggeri M, Peccatori FA, Azim HA Jr, Colleoni M, Saura C, Shimizu C, Saetersdal AB, Kroep JR, Mailliez A, Warner E, Borges VF, Amant F, Gombos A, Kataoka A, Rousset-Jablonski C, Borstnar S, Takei J, Lee JE, Walshe JM, Borrego MR, Moore HCF, Saunders C, Cardoso F, Susnjar S, Bjelic-Radisic V, Smith KL, Piccart M, Korde LA, Goldhirsch A, Gelber RD, Pagani O. Who are the women who enrolled in the POSITIVE Trial: a global study to support young hormone receptor positive breast cancer survivors desiring pregnancy? *Breast* 2021;59:327-338. doi: 10.1016/j.breast.2021.07.021. 2021 Aug 3. (IBCSG 48-14) (Journal Impact Factor 4.380).

401. Goodwin PJ, Dowling RJO, Ennis M, Chen BE, Parulekar WR, Shepherd LE, Gelmon KA, Whelan TJ, Ligibel JA, Hershman DL, Mayer IA, Hobday TJ, Rastogi P, Rabaglio-Porettti M, Lemieux J, Thompson AM, Rea DW, Stambolic V. Cancer antigen 15-3/mucin 1 levels in CCTG MA.32: A breast cancer randomized trial of metformin vs placebo. *JNCI Cancer Spectr* 2021;5(5):pkab066. doi: 10.1093/jncics/pkab066. Epub 2021 July 28. (IBCSG 40-11).

400. Burstein HJ, Curigliano G, Thürlimann B, Weber WP, Poortmans P, Regan MM, Senn HJ, Winer EP, Gnant M, Panelists of the St. Gallen Consensus Conference. Customizing local and systemic therapies for women with early breast cancer: The St. Gallen International Consensus Guidelines for treatment of early breast cancer 2021. *Ann Oncol* 2021;S0923-7531(21):02104-9. doi: 10.1016/j.annonc.2021.06.023. Epub 2021 July 6. (Special article) (Journal Impact Factor 32.976).

399. Goodwin PJ, Dowling RJO, Ennis M, Chen BE, Parulekar WR, Shepherd LE, Burnell MJ, Vander Meer R, Molckovsky A, Gurjal A, Gelmon KA, Ligibel JA, Hershman DL, Mayer IA, Whelan TJ, Hobday TJ, Rastogi P, Rabaglio M, Lemieux J, Thompson AM, Rea DW, Stambolic V. Effect of metformin versus placebo on metabolic factors in the MA.32 randomized breast cancer trial. *npj Breast cancer* 2021;7(1):74. doi: 10.1038/s41523-021-00275-z. Epub 2021 June 8. (IBCSG 40-11) (Journal Impact Factor 6.000 / Supplemental Table 1).

398. Pimentel I, Chen BE, Lohmann AE, Ennis M, Ligibel J, Shepherd L, Hershman DL, Whelan T, Stambolic V, Mayer I, Hobday T, Lemieux J, Thompson A, Rastogi P, Gelmon K, Rea D, Rabaglio M, Ellard S, Mates M, Bedard P, Pitre L, Vandenberg T, Dowling RJO, Parulekar W, Goodwin PJ. The effect of metformin vs placebo on sex hormones in Canadian Cancer Trials Group MA.32. *J Natl Cancer Inst* 2021;113(2):192-193. doi: 10.1093/jnci/djaa082. (IBCSG 40-11) (Journal Impact Factor 11.577).

397. Tutt ANJ, Garber JE, Kaufman B, Viale G, Fumagalli D, Rastogi P, Gelber RD, de Azambuja E, Fielding A, Balmana J, Domcheck SM, Gelmon KA, Hollingsworth SJ, Korde LA, Linderholm B, Bandos H, Senkus E, Suga JM, Shao Z, Pippas AW, Nowecki Z, Huzarski T, Ganz PA, Lucas PC, Baker N, Loibl S, McConnell R, Piccart M, Schmutzler R, Steger GG, Costantino JP, Arahmani A, Wolmark N, McFadden E, Karantza V, Lakhani SR, Yothers G, Campbell C, Geyer CE Jr;

for the OlympiA Clinical Trial Steering Committee and Investigators. Adjuvant olaparib for patients with BRCA1- or BRCA2-mutated Breast Cancer. *N Engl J Med* 2021. doi: 10.1056/NEJMoa2105215. Epub 2021 June 3. (IBCSG 50-14) (Journal Impact Factor 74.669 / Supplementary Appendix).

396. Moreno-Aspitia A, Holmes EM, Jackisch C, de Azambuja E, Boyle F, Hillman DW, Korde L, Fumagalli D, Izquierdo MA, McCullough AE, Wolff AC, Pritchard KI, Untch M, Guillaume S, Ewer MS, Shao Z, Sim SH, Aziz Z, Demetriou G, Mehta AO, Andersson M, Toi M, Lang I, Xu B, Smith IE, Barrios CH, Baselga J, Gelber RD, Piccart-Gebhart M, for the ALTO Steering Committee and Investigators. Updated results from the International Phase III ALTO Trial (BIG 2-06/Alliance N063D): Presented at the 2017 Annual Meeting of the American Society of Clinical Oncology. *Eur J Cancer* 2021;148:287-296. doi: 10.1016/j.ejca.2021.01.053. Epub 2021 March 22. (IBCSG 36-07) (Journal Impact Factor 7.275).

395. Piccart M, Procter M, Fumagalli D, de Azambuja E, Clark E, Ewer MS, Restuccia E, Jerusalem G, Dent S, Reaby L, Bonnefoi H, Krop I, Liu TW, Pińkowski T, Toi M, Wilcken N, Andersson M, Im YH, Tseng LM, Lueck HJ, Colleoni M, Monturus E, Sicoe M, Guillaume S, Bines J, Gelber RD, Viale G, Thomssen C; APHINITY Steering Committee and Investigators. Adjuvant pertuzumab and trastuzumab in early HER2-positive breast cancer in the APHINITY Trial: 6 years' follow-up. *J Clin Oncol* 2021. doi: 10.1200/JCO.20.01204. Epub 2021 Feb 4. (IBCSG 39-11) (Journal Impact Factor 32.956 / Data Supplement).

394. Mayer EL, Dueck C, Martin M, Rubovszky G, Burstein HJ, Bellet-Ezquerria M, Miller KD, Zdenkowski N, Winer EP, Pfeiler G, Goetz M, Ruiz-Borrego M, Anderson D, Nowecki Z, Loibl S, Moulder S, Ring A, Fitzal F, Traina T, Chan A, Rugo HS, Lemieux J, Henao F, Lyss A, Antolin Novoa S, Wolff AC, Vetter M, Egle D, Morris PG, Mamounas EP, Gil-Gil MJ, Prat A, Fohler H, Metzger Filho O, Schwarz M, Dufrane C, Fumagalli D, Puyana Theall K, Lu DR, Huang Bartlett C, Koehler M, Fesl C, DeMichele A, Gnant M. Palbociclib with adjuvant endocrine therapy in early breast cancer (PALLAS): Interim analysis of a multicentre, open-label, randomized, phase 3 study. *Lancet Oncol* 2021;22(2):212-222. doi: 10.1016/S1470-2045(20)30642-2. Epub 2021 Jan 15. (IBCSG 52-15) (Journal Impact Factor 33.752).

# We bid farewell to Angelo Di Leo

It is with deep sorrow that we announce the passing of Angelo Di Leo in June 2021.

Angelo, an outstanding scientist and true supporter and leader of IBCSG, has acted for many years as Co-Chair of the Scientific Committee, Chair of the Biological Protocol Working Group and distinguished member of the Foundation Council.



Angelo Di Leo's work and research was crucial for the development and realization of many IBCSG trials such as PYTHIA, TOUCH and POLAR. He was also the recipient of many awards and prizes such as the ESMO Lifetime Achievement Award in 2019.

But for us, Angelo was above all a fantastic and kind person with a wonderful sense of humor which he never lost despite his trying disease. His courage was admirable, as he knew only too well what the future would bring, yet never showed any fear.

Our thoughts and warm wishes are with Angelo's wife and his daughter, his family and his colleagues from Prato with whom he had worked so closely.

Angelo Di Leo is greatly missed.



# Pink Ribbon Music Gala

For the second time, on October 30<sup>th</sup>, 2021, the Pink Ribbon Music Gala took place in the beautiful ballroom of the Dolder Grand Hotel - with a view overlooking the evening lights of the city of Zurich. It was an unforgettable, glamorous event and the 200 elegant guests experienced fine cuisine and top-class show performances by Swiss music performers and dance stars. At this year's auction, presented by the well-known and charming host Sven Epiney, the guests bid enthusiastically and 95,000 Swiss francs were raised for the POSITIVE STUDY of the "International Breast Cancer Study Group". The objective of the study is to enable patients to become pregnant after a breast cancer diagnosis.

**We sincerely thank:**

PINK RIBBON SWITZERLAND, Nicole Zindel and Beatrice Wegmann of 2C Communication GmbH, all of the generous guests, The Dolder Grand, Sisley Paris, Bucherer, ZENITH, PKZ, Ochsner Shoes, Bluemehuus Unterstrass, FOCUS Water, Venus Gillette, Aston Martin Zürich, Faulhaber Marketing Services, OZENIT, Le Perlage, CERVO Mountain Resort, ZERMATTERS, Flemings Mayfair Hotel, Marc Sway, Visa, Protectas, Sven Epiney, Curtis Burger, Eliane Müller, Caroline Chevin, Tiziana Gulino, Nubya, Jesse Ritch, James Gruntz and all other supporters, donors and volunteers who enabled this event.



Nicole Zindel (2C Communication GmbH) and Monica Ruggeri (Program for Young Patients) are undeniably delighted with the successful evening.

# Pink Ribbon Golf Tour

The amazing amount of 50,000 Swiss Francs was raised thanks to the participation fees and donations at the PINK RIBBON GOLF SERIES 2021 for young breast cancer patients of the "International Breast Cancer Study Group". The three charity golf tournaments took place at the beautiful and meticulously-kept golf clubs Holzhäusern, Ybrig and Winterberg in the midst of picturesque nature, where dedicated lady golfers (gentlemen were also welcome in Holzhäusern and Ybrig) met for "drive-pitch-and-putts" in the very best of spirits. Even some celebrities were spotted among the participants - and to everyone's delight, the Swiss international music star, DJ Bobo even won the tournament in Ybrig. An exciting event program and many other surprises rounded off the eventful days of the golf tournament.



**We sincerely thank:**

PINK RIBBON SWITZERLAND, Nicole Zindel and Beatrice Wegmann of 2C Communication GmbH, all golfers, the Golf-clubs Winterberg, Ybrig, Holzhäusern, Estée Lauder Companies Switzerland, Bucherer Fine Jewelry, Julius Bär, L'Anima di Vergani, SPAZE Hairstudio, FOCUS Water and all other supporters, donors and volunteers who enabled this event.



# Pink Ribbon Walk



On September 5<sup>th</sup>, 2021, the IBCSG Pink Ladies participated in the "Virtual Pink Ribbon Charity Walk". Their walk was deemed a gesture of solidarity and appreciation for young women with breast cancer. Their simple and heartfelt message: You are not alone!



# Swiss Womens Race

The 35<sup>th</sup> "Schweizer Frauenlauf" in August of 2021, was a major success. Over 4500 runners of all ages took part in the four-day happening in Berne, which also ranks as the largest women's sports event in Switzerland. Among the athletes were - unmistakably - the great Pink Ladies. The objective of their participation in this event was to call attention to the PYP (Program for Young Patients) and to appeal for solidarity and fundraising. The IBCSG was an official charity partner.

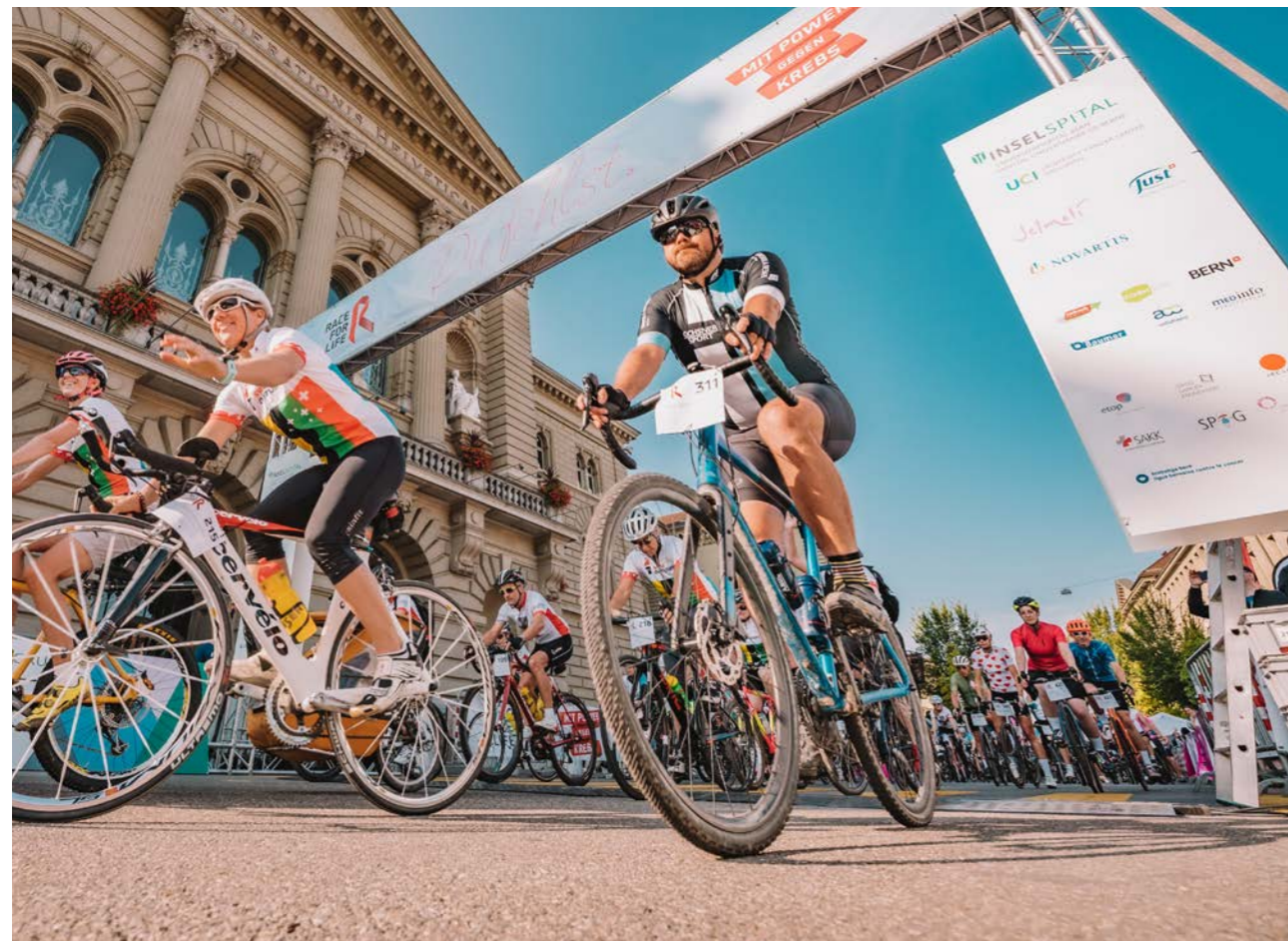


# Race for Life

At the Race for Life event on September 12, 2021, ETOP and IBCSG Partners were present with a joint information booth at the Bundesplatz in Berne. Race for Life is a charity bicycle marathon with the motto: On the road for the support of cancer patients and for the support of cancer research. Via the website you could make donations to your favorite team.

**The slogans of our teams were:**

Team ETOP: ETOP - with strong wings against lung cancer  
Team IBCSG: IBCSG pink ladies - women for women



“IBCSG has been a cornerstone of BIG since the beginning, with Martine Piccart and the late Aron Goldhirsch putting their minds together to facilitate breast cancer research globally. No doubt the merger between IBCSG and ETOP will lead to important new synergies for breast and lung cancer clinical trials across Europe and the globe.”

Theodora Goulioti, CEO Breast International Group BIG

# Annual Financial Statement

1.7.2021–31.12.2021

## Balance

Assets	31.12.21	01.07.21
	TCHF	TCHF
Cash	12 001	12 285
Financial assets short-term	102	76
Accounts receivable	907	2 705
Other short-term receivables	346	738
Prepaid expenses and accrued income	1 794	582
<b>Current assets</b>	<b>15 150</b>	<b>16 386</b>
Financial assets	11 892	12 294
<b>Non-current assets</b>	<b>11 892</b>	<b>12 294</b>
<b>Total assets</b>	<b>27 042</b>	<b>28 680</b>
Liabilities	31.12.21	01.07.21
	TCHF	TCHF
Accounts payable	383	714
Advance payments short-term	17 921	14 515
Other short-term liabilities	121	98
Accrued expenses and deferred income	1 850	2 400
<b>Short-term liabilities</b>	<b>20 275</b>	<b>17 727</b>
Advance payments long-term	528	4 835
<b>Long-term liabilities</b>	<b>528</b>	<b>4 835</b>
Dedicated Fund Support Breast Cancer Clinical Research	1 024	1 024
<b>Dedicated funds</b>	<b>1 024</b>	<b>1 024</b>
Foundation capital	175	175
Voluntary retained earnings		
Profit brought forward	4 919	4 919
Profit for the year	121	
<b>Equity</b>	<b>5 215</b>	<b>5 094</b>
<b>Total liabilities and equity</b>	<b>27 042</b>	<b>28 680</b>

## Income statement

	1.7.–31.12.2021
	TCHF
Research contributions	5 511
Grants and donations/Income from other research organizations	2 191
Other contributions	145
Reimbursements from externals for services	33
<b>Operating income</b>	<b>7 880</b>
Research contributions to members/sites and suppliers	-4 199
Cooperation expenses	-117
Personnel expenses	-2 374
Other operating expenses	-433
<b>Operating expenses</b>	<b>-7 123</b>
<b>Operating result</b>	<b>757</b>
Financial income	86
Financial expenses	-722
<b>Profit for the year</b>	<b>121</b>

The statutory auditor KPMG AG has examined the financial statements (consisting of balance sheet, income statement and notes) for the period from July 1, 2021, to December 31, 2021 and recommended its approval to the Foundation Board.

# We say thank you...

Thank you



...to all patients who have participated or are still participating in our trials, as well as to their families and caregivers. You are at the very core of all our clinical trials.

...to all investigators and their teams at participating hospitals, as well as our partner organizations, for their important commitment. Without their great support, we would not be able to conduct our studies.

...to all members of our Foundation Board, the two Scientific Committees, our Study Chairs and the two Independent Data Monitoring Committees (IDMCs). They lay the foundation for our research through their vision, knowledge and ideas.

...to all of our benefactors who contribute significantly to the funding of our projects and to all of our pharmaceutical partners who contribute to the majority of many study budgets.

...to all of the staff of the ETOP IBCSG Partners Coordinating Center in Bern (Switzerland), the Statistical Centers in Boston (USA) and Athens (Greece), the Data Management Center in Amherst (USA), and the staff of the Central Laboratories in Milan (Italy) and Lausanne (Switzerland). Their expertise and commitment are crucial to the success of our studies.

# List of our Donors

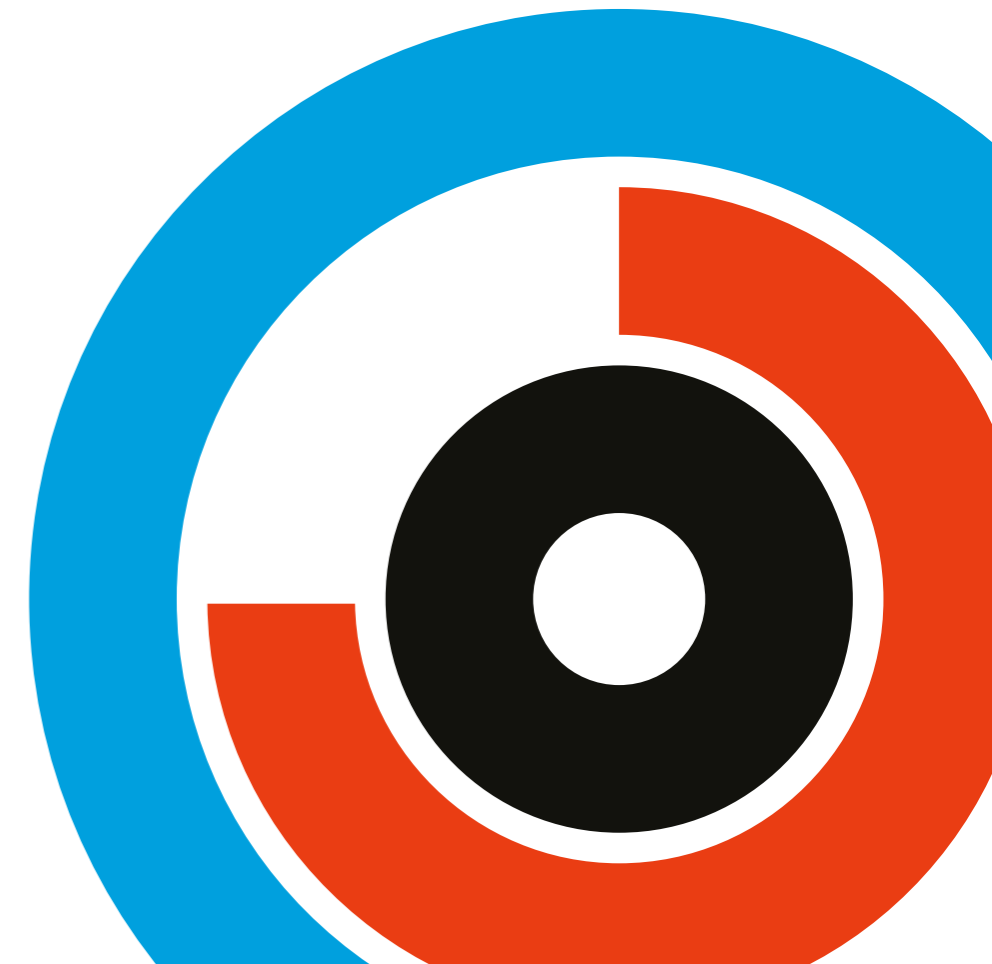
- Anna dai capelli corti
- Baillet Latour Fund
- Bärigüf
- Breast Cancer Research Foundation
- Breast International Group BIG
- C&A
- Fondazione Umberto Veronesi
- Gateway
- Geissbühler Stiftung
- Krebsforschung Schweiz
- Krebsliga Schweiz
- PINK RIBBON
- Rising Tide Foundation for Clinical Cancer Research (RTFCCR)
- San Salvatore Foundation
- Stiftung St. Gallen Oncology Conferences (SONK)
- SUVA
- Swiss Cancer Foundation
- USZ Foundation
- Supporting companies in the research-based pharmaceutical industry and many other private companies and individuals

**ETOP IBCSG  
Partners Foundation**  
Effingerstrasse 33  
3008 Bern  
Switzerland  
+41 31 511 94 00  
contact@etop.ibcsg.org  
www.etop.ibcsg.org

 ETOP IBCSG Partners Foundation

**We appreciate your donation**  
UBS IBAN CH550023523544408840E

For reasons of legibility, the masculine form has been chosen in the text; nevertheless, the information refers to members of all genders.





Foundation for International  
Cancer Research