

# Annual Report 2022



Foundation for International  
Cancer Research

# Annual Report 2022

Editorial	5
Key Figures	6
Trial Activities	8
4 Key Questions – 4 Smart Answers	24
Awards	27
Meetings	28
Events	32
Foundation Board	38
Coordinating Center	40
Publications	42
Annual Financial Statement	46
Thank you	48
Donors	50
Contact	51



# Dear Reader

It has been an exciting, active and successful year. We developed and launched several new ETOP IBCSG sponsored projects and published 20 scientific papers.

The highlight of 2022 came at the very end of the year. On December 8, 2022, the long-awaited first results from the IBCSG POSITIVE study were presented at the 2022 San Antonio Breast Cancer Symposium.

The POSITIVE study aims to address the clinical dilemma faced by many young women with breast cancer: receiving the best possible treatment while at the same time seeking to have a child in the future.

The presented results now show that pausing endocrine therapy to become pregnant does not increase the short-term risk of breast cancer recurrence. This marks an important breakthrough in the treatment of young women with hormone receptor-positive early breast cancer who desire to have a baby.

As the leading research Group and the sponsor of the POSITIVE study, we are very proud of these practice-changing results and we continue our efforts to see them confirmed for long-term risk, which is expected after 2029.

With the pandemic in the rearview mirror, we have enthusiastically embarked on the future path of the merged Foundation, developing strategies, discussing study and project acquisition, and identifying opportunities for interaction and collaboration.



With this Annual Report, we are pleased to provide you with a glimpse into our work over the past year and to share with you some highlights and updates from our research activities.

Thank you for your continued trust and support.

Prof. Dr. med. Rolf A. Stahel  
President of the Foundation Board  
ETOP IBCSG Partners Foundation

# Key Figures in 2022



**210**

**Recruited Patients 2022**

ETOP IBCSG sponsored: ETOP 76, IBCSG 118  
Non-ETOP IBCSG sponsored: ETOP 0, IBCSG 16



**34**

**Participating countries  
in ongoing  
ETOP IBCSG trials**

ETOP 14, IBCSG 33

**46**

Coworkers Coordinating Center



**5**

**Trials launched in 2022**

ETOP IBCSG sponsored: ETOP 3, IBCSG 0  
Non-ETOP IBCSG sponsored: ETOP 0, IBCSG 2

**13**

**Open trials, open to recruitment**

ETOP IBCSG sponsored: ETOP 4, IBCSG 2  
Non-ETOP IBCSG sponsored: ETOP 0, IBCSG 7

**15**

**Open trials, in follow-up**

ETOP IBCSG sponsored: ETOP 2, IBCSG 7  
Non-ETOP IBCSG sponsored: ETOP 1, IBCSG 5

**29**

**TR projects ongoing**

ETOP 6, IBCSG 23



**20**

**Publications**

ETOP 9, IBCSG 11  
cumulative: ETOP 33, IBCSG 418

# The IBCSG POSITIVE Study

First POSITIVE results presented at the 2022 San Antonio Breast Cancer Symposium mark a breakthrough in the treatment of young women with hormone receptor-positive early breast cancer.

On December 9, 2022, the long-awaited POSITIVE results from the primary analysis were presented at the San Antonio Breast Cancer Symposium. The presentation was enthusiastically received and the worldwide interest and recognition was tremendous.

The POSITIVE study was designed to address the clinical dilemma faced by many young women who want to receive the best possible breast cancer treatment while at the same time desiring to have a biological child in the future. This is particularly troubling for women with hormone receptor-positive breast cancer, where there has been historical concern that pregnancy may increase the risk of breast cancer recurrence.

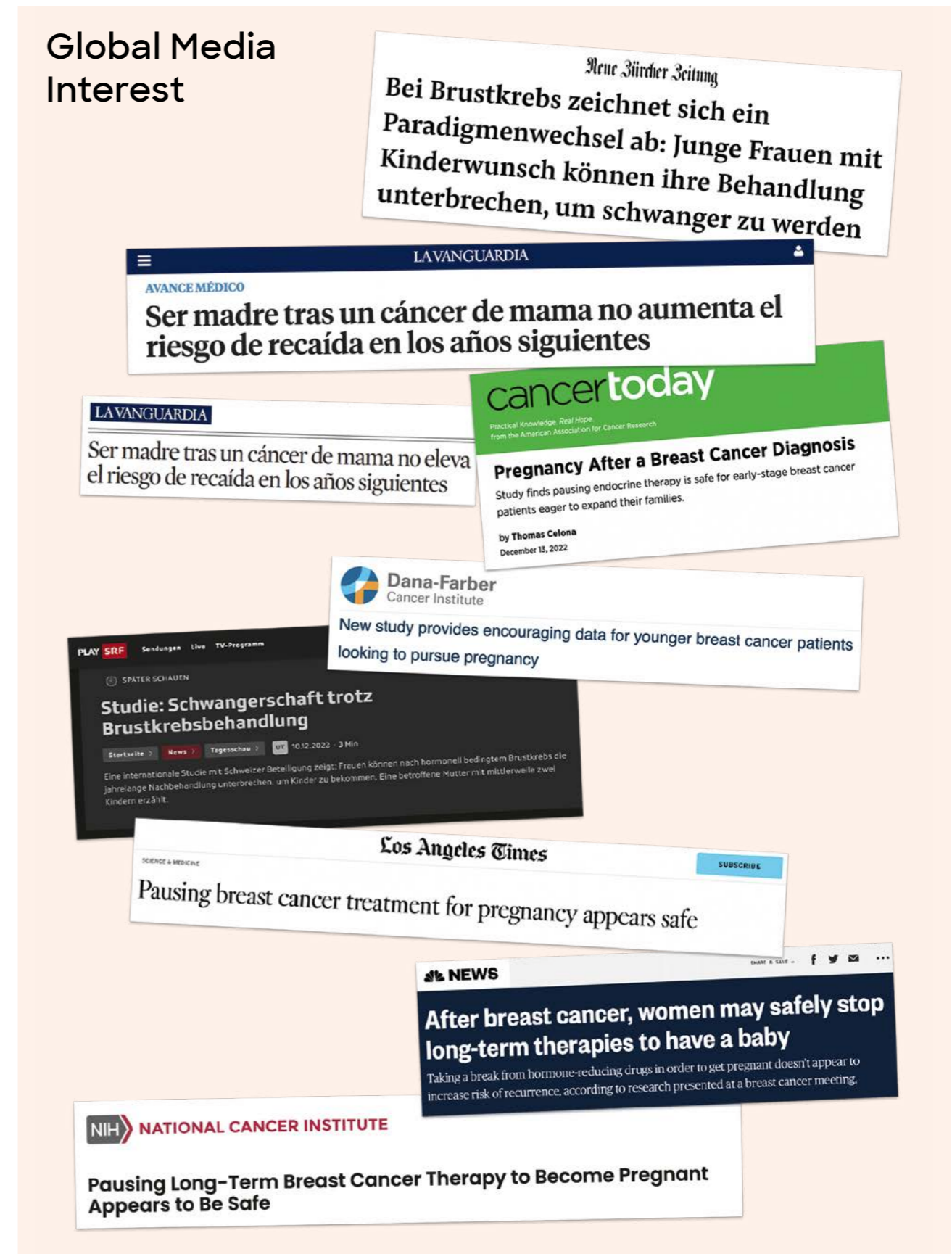
Approximately 20% of women with breast cancer are diagnosed during their reproductive years. The majority of young women with early breast cancer have

what is called hormone receptor-positive breast cancer. They receive endocrine therapy for 5–10 years after breast surgery, to reduce the risk of breast cancer returning. However, this treatment may reduce fertility and the chances of subsequent successful pregnancy, given conception is contraindicated during endocrine therapy. The POSITIVE results now confirm that pausing endocrine therapy to try to become pregnant can be done without a short-term risk of breast cancer recurrence.

From December 2014 to December 2019, 518 young women from 20 countries around the world were enrolled in the POSITIVE study. All women had hormone receptor-positive breast cancer and had completed 18–30 months of endocrine therapy after breast surgery at the time they entered the POSITIVE study.

<b>Participants</b>	518
<b>Age</b>	42 years and younger
<b>From 20 Countries</b>	61% Europe, 23% North America, 16% Asia/Pacific and Middle East countries
<b>Enrollment</b>	116 hospitals across 20 countries
<b>Babies born</b>	365

## Global Media Interest





“For many years we have fought to help women with breast cancer to live longer, but POSITIVE is about how they live. We have enabled them to live longer, but we also need to do something to enable them to live their lives better.”

Professor Olivia Pagani, POSITIVE International Co-Chair

At the time of the primary analysis, a majority of participants have had a live birth and a whopping 365 “POSITIVE babies” had been born.

These results represent an important breakthrough in the treatment of young women with hormone receptor-positive breast cancer and provide encouraging guidance for women with breast cancer who wish to have a baby.

However, as hormone receptor-positive breast cancer can recur many years after the initial diagnosis, longer follow-up is needed to provide definitive reassurance that endocrine therapy can be safely interrupted for pregnancy in the long term. Women enrolled in the POSITIVE study are therefore planned to be followed until 2029.



Professor Ann Partridge,  
POSITIVE North-American Co-Chair

Olivia Pagani, Professor of Oncology at the University of Geneva and Lugano, Switzerland and Ann Partridge, vice chair of medical oncology at Dana-Farber Cancer Institute and professor of medicine at Harvard Medical School, are the international and North American scientific leaders of the POSITIVE study.

The POSITIVE study is led by the IBCSG, with the ETOP IBCSG Partners Foundation as the legal sponsor, and is conducted as an international collaboration under the umbrella of the Breast International Group (BIG).

It is only thanks to this global cooperation and, most importantly, the generous support of numerous foundations, charities and private donors around the world that this challenging research project has become possible.

The ETOP IBCSG Partners Foundation, in collaboration with BIG against breast cancer, is committed to raising additional funds to ensure the crucial long-term follow-up of the POSITIVE study and its translational research projects.

We are currently seeking foresighted donors who are interested in joining the POSITIVE funding consortium to support the continuation of this practice-changing clinical study whose final results could definitively break the resistance that hinders this important life plan for many young patients.



“Receiving the diagnosis of breast cancer is bad, but not living is worse. The POSITIVE study gave me the chance not to give up my desire to have a baby. Today, I have two wonderful healthy children, the joy of my life!”

Sabrina, POSITIVE participant, with her daughter

# IBCSG Presentation at ASCO 2022

Updated results from three IBCSG trials provide further guidance for the treatment of premenopausal women with hormone-receptor-positive, HER2-negative early breast cancer who are at high-risk of breast cancer recurrence.



Dr. Meredith Regan, the IBCSG Group Statistician, presents the updated results from the BIG 1-98, SOFT and TEXT studies.

Most women with hormone-receptor-positive, HER2-negative breast cancer are diagnosed at an early stage of their disease. In most of the cases, the primary treatment is surgery, followed by adjuvant therapy, a type of medical treatment given after surgery to reduce the risk of the cancer returning. For patients with hormone receptor-positive, HER2-negative breast cancer, adjuvant treatment typically consists of endocrine therapy, a hormonal treatment to block the effects of estrogen on cancer cells.

A new class of drugs called CDK4/6 inhibitors work by regulating the cell cycle to block cell division. These drugs, when given in combination with endocrine therapy, have shown significant benefit in patients with hormone receptor-positive, HER2-negative breast cancer. However, in patients at high-risk of breast cancer recurrence, several clinical studies of adjuvant CDK4/6 inhibitors have shown inconsistent results.

To investigate this inconsistency, Meredith Regan, who leads the IBCSG Statistical Center in Boston, and her colleagues revisited the data from the three earlier IBCSG-led studies BIG 1-98, SOFT, and TEXT, in order to investigate the risk of breast cancer recurrence during the early period following adjuvant treatment.

These three key IBCSG studies investigated adjuvant endocrine therapy in a total of more than 10,000 patients and reported the first results after 5 years, followed by the long-term results after 10 years and more.

For comparison with the CDK4/6 inhibitor studies, Meredith Regan and colleagues specifically analyzed a subset of data from the BIG 1-98, SOFT, and TEXT studies including only patients with high-risk breast cancer and focusing on the short-term results following adjuvant endocrine treatment.

Meredith Regan presented the results of this analysis at the American Society of Clinical Oncology (ASCO) meeting in June 2022.

As expected, the BIG 1-98, SOFT and TEXT results show that the risk of recurrence is relatively high immediately after the end of adjuvant endocrine therapy, but decreases steadily over the next five to 10 years and remains at a low level.

The pattern of risk in the first two to three years was somewhat different in each of the three studies, another important finding that oncologists should be aware of when deciding on treatment plans for patients with early breast cancer who are at high-risk of recurrence.

“The updated results of the BIG 1-98, SOFT and TEXT studies underscore the quality and importance of our IBCSG trials. They have repeatedly contributed to setting the standard of care for patients with breast cancer in the past and continue to provide critical information to healthcare providers through numerous analyses conducted by our Statistical Center in Boston.”

# The ETOP AMAZE-Lung Trial

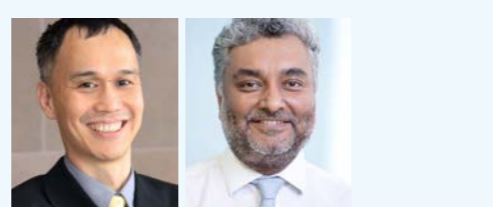
A treatment option for patients with EGFR-mutant non-small cell lung cancer when standard therapy fails.

One of the causes of non-small cell lung cancer (NSCLC) is the presence of a mutation in the EGFR gene that leads to uncontrolled cell growth.

The standard of care for patients with this diagnosis is treatment with a specific class of drugs called TKIs, which block EGFR and help stop the lung cancer from growing.

Unfortunately, despite an initial good response, most patients experience a relapse of their lung cancer within months or a few years. This means that sooner or later the tumor develops resistance to these EGFR-TKIs. However, it is still unclear what causes this resistance. The standard of care for patients with EGFR-mutant non-small cell lung cancer who no longer respond to TKI treatment is chemotherapy.

This is where the ETOP AMAZE-lung study comes in. By combining continued EGFR-TKI therapy with the two antibodies amivantamab and bevacizumab, the study aims at finding an alternative to chemotherapy. Amivantamab and bevacizumab may be effective in reversing resistance to EGFR-TKIs and preventing cancer growth.



Professor Ross Soo from the National University Cancer Institute in Singapore and Professor Sanjay Popat from the Royal Marsden Hospital in London are the scientific leaders of the AMAZE-lung study.

The ETOP IBCSG Partners Foundation is the global coordinator and sponsor and of the study.

It is planned to enroll 60 patients from approximately 30 centers in France, Italy, the Netherlands, Singapore, South Korea, Spain, Switzerland and the United Kingdom.

# The ETOP ADEPPT Trial

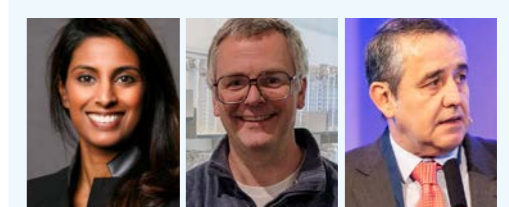
An opportunity for patients typically excluded from participating in clinical studies.

Performance status measures how well a person is able to perform normal daily activities while living with cancer. It is often used in clinical studies to define patients with similar health conditions to ensure reproducibility of study results. Patients with poor performance status are often excluded from clinical studies. Older patients are also often excluded because they are more likely to have medical conditions that make them ineligible for clinical studies.

Non-small cell lung cancer (NSCLC) is the most common type of lung cancer. The disease is caused by several factors, one of which is a mutation in a gene called KRAS. Patients diagnosed with KRAS-mutant NSCLC are typically treated with chemotherapy or immunotherapy, or a combination of both. However, most patients experience disease progression. Patients whose lung cancer progresses during initial treatment may then receive KRAS-targeted treatment with an oral drug such as adagrasib.

ETOP ADEPPT is a study of adagrasib in patients with KRAS-mutant NSCLC following standard chemotherapy, immunotherapy or a combination of both. The study builds on the successful results of adagrasib in previous studies in the “normal” patient population where it was effective in stopping or slowing the growth of lung cancer.

The ADEPPT study is expanding the patient population to include an elderly population and/or patients with poor performance status.



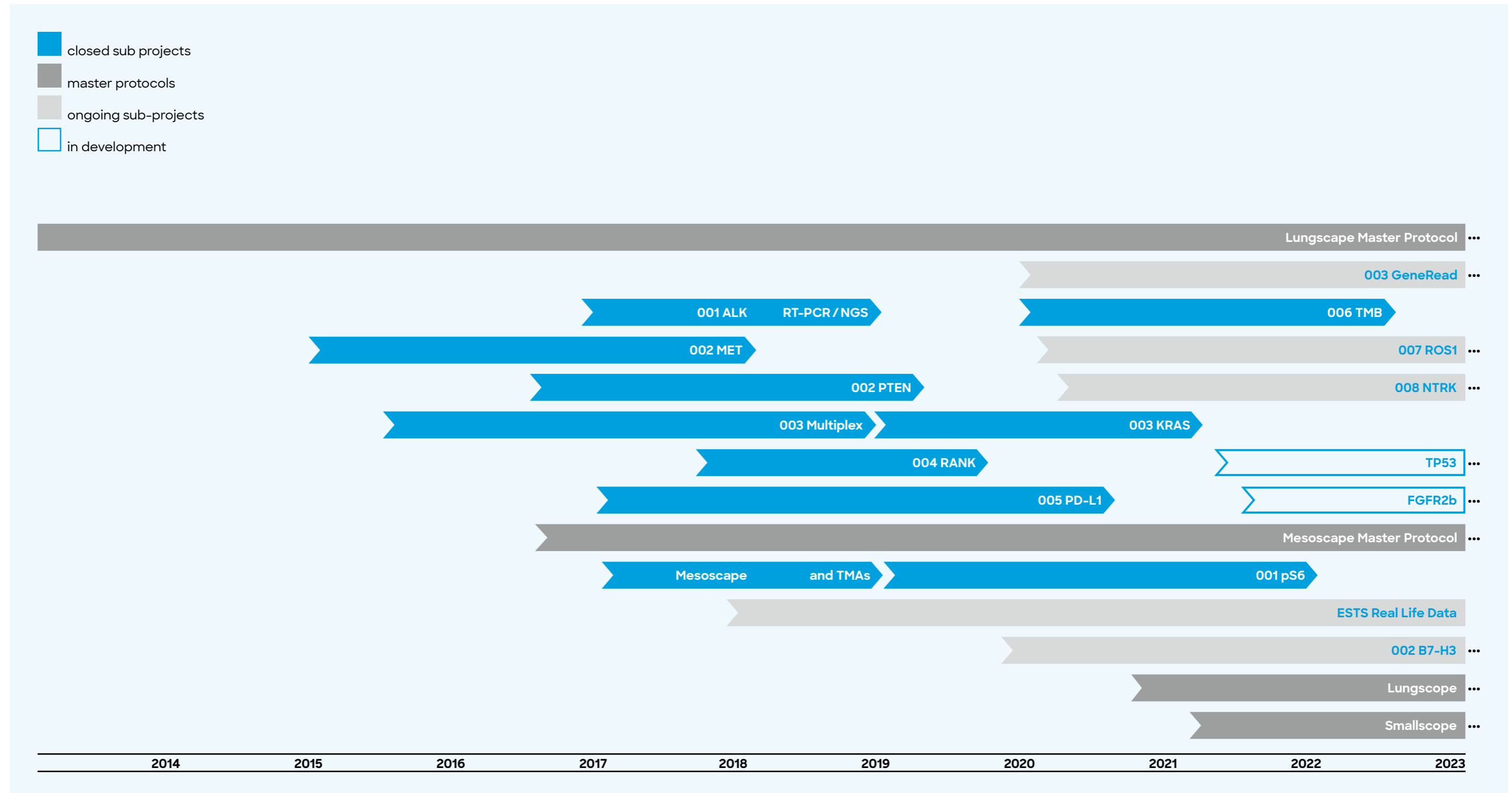
Professor Jarushka Naidoo from Beaumont Hospital Dublin is the scientific lead for the ADEPPT study, Dr. Colin Lindsay from the Christie NHS Foundation Trust Manchester and Dr. Bartomeu Massuti from the General Hospital in Alicante are the co-leads.

ADEPPT is an important clinical study that addresses a classic academic research question. It allows elderly patients and patients with poor performance status to participate in a clinical trial and benefit from a promising treatment. We are proud of this important step in opening clinical studies to a broader population.

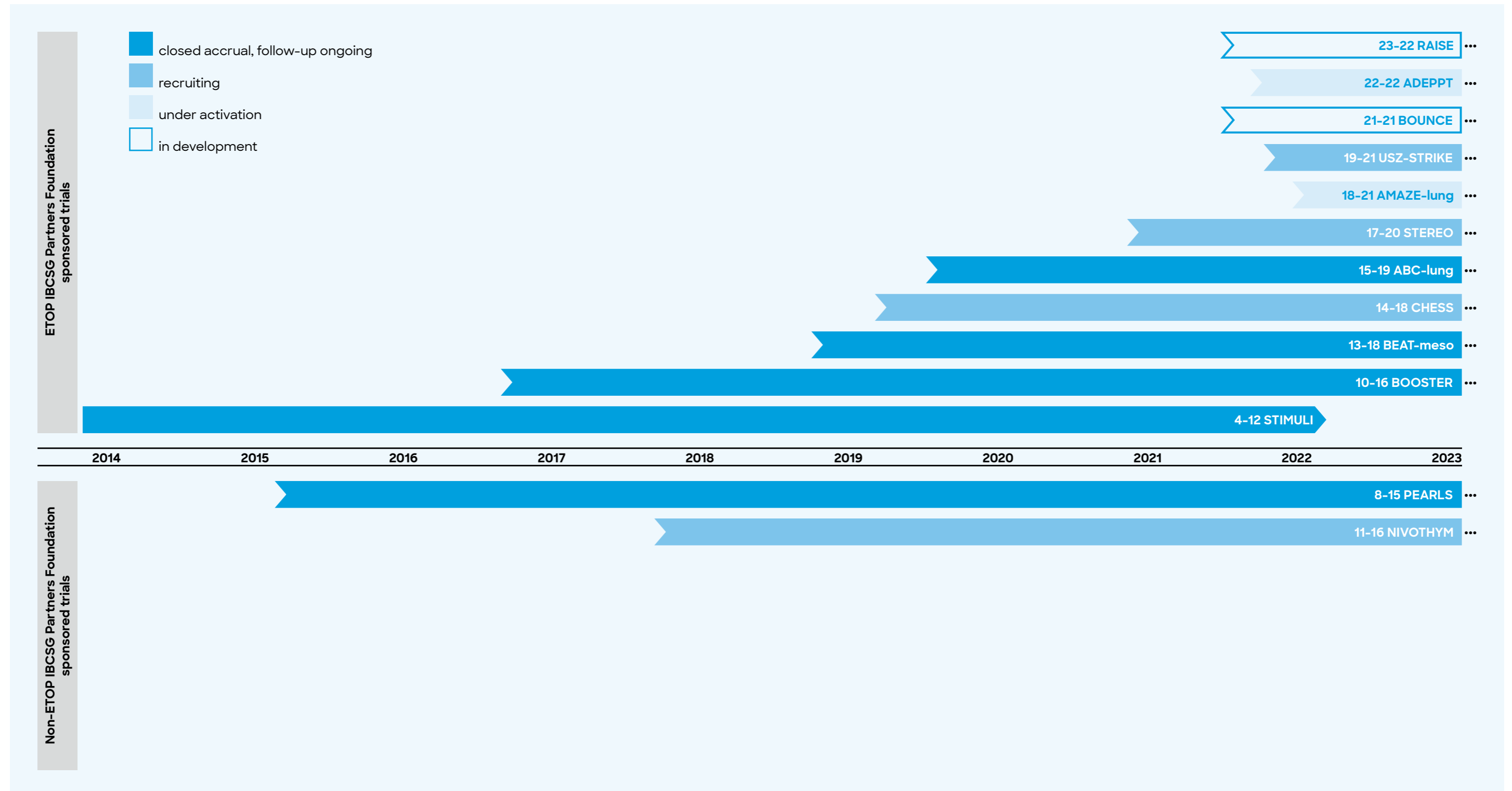
The ETOP IBCSG Partners Foundation is the sponsor and has the global lead for coordinating this study, which is being conducted in collaboration with Cancer Trials Ireland and the Spanish Lung Cancer Group.

It is planned to enroll 68 patients from 26 centers in Belgium, France, Ireland, Italy, Spain, and the United Kingdom.

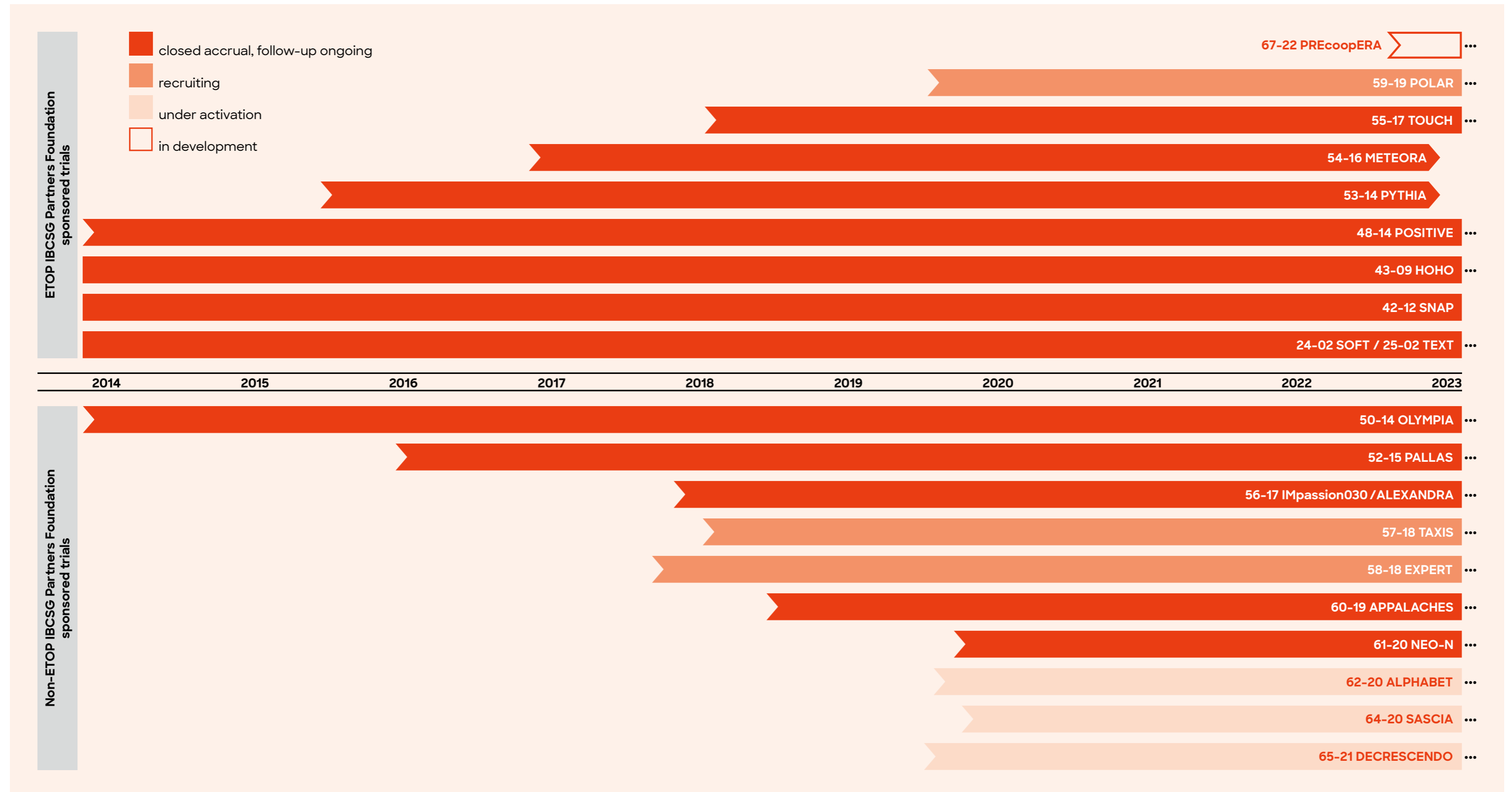
# Ongoing Translational Research Projects on Lung Cancer



# Ongoing Clinical Studies on Lung Cancer



# Ongoing Clinical Studies on Breast Cancer



# Countries Participating in ETOP IBCSG Partners Foundation Trials

■ Lung ■ Breast

	4-12 STIMULI	10-16 BOOSTER	13-18 BEAT-meso	14-18 CHESS	15-19 ABC-lung	17-20 STEREO	18-21 AMAZE-lung	19-21 USZ-STRIKE
Australia	x							
Austria								
Belgium	x		x					
Brazil								
Canada								
Chile								
Egypt								
France	x		x				x	
Germany	x				x			
Greece								
Hungary								
India								
Ireland		x						
Israel								
Italy			x	x		x	x	x
Japan								
Lebanon								
Netherlands	x	x		x		x	x	x
New Zealand								
Norway								
Peru								
Poland						x		
Portugal								
Serbia								
Singapore		x			x	x	x	
Slovenia								
South Africa								
South Korea		x			x	x	x	
Spain	x	x	x	x	x	x	x	
Sweden						x		
Switzerland	x	x	x	x	x	x	x	x
Turkey								
UK	x		x			x	x	x
USA								

	22-22 ADEPPT	24-02 SOFT	25-02 TEXT	42-12 SNAP	43-09 HOHO	48-14 POSITIVE	53-14 PYTHIA	54-16 METEORA II	55-17 TOUCH	59-19 POLAR
Australia		x	x			x				
Austria						x				x
Belgium	x	x	x	x		x	x		x	
Brazil		x								
Canada		x	x			x				
Chile		x								
Egypt			x							
France	x	x				x			x	x
Germany		x	x							
Greece						x				
Hungary		x	x							x
India		x	x							
Ireland	x	x		x		x				
Israel		x				x				
Italy	x	x	x	x	x	x	x	x	x	x
Japan						x				
Lebanon						x				
Netherlands		x				x				
New Zealand		x	x							
Norway						x				
Peru		x	x							
Poland		x								
Portugal		x				x				
Serbia		x				x				
Singapore										
Slovenia			x	x		x				
South Africa		x	x							
South Korea						x				
Spain	x	x		x		x				x
Sweden		x	x							
Switzerland		x	x	x	x	x			x	x
Turkey		x								
UK	x	x	x				x			
USA		x	x			x				

# 4 Key Questions - 4 Smart Answers

Our two distinguished members of the Executive Committee of the ETOP IBCSG Partners Foundation Board and world-wide recognized clinicians and researchers, Professor Sherene Loi and Professor Solange Peters share their views on the merged ETOP IBCSG network.

- 1 Where do you see the greatest opportunities to conduct clinical trials in the field of lung cancer/breast cancer?
- 2 Where do you see the strengths of the merger?
- 3 What new opportunities do you think the combined efforts have for attracting new scientific trials and projects on a global basis?
- 4 Can you briefly describe an experience from which you, your team and/or your research have already been able to profit from?



**Sherene Loi**, MBBS (Hons), PhD, FRACP, FAHMS is a medical oncologist specialized in breast cancer treatment as well as a clinical scientist with expertise in genomics, immunology and drug development. Sherene is a Professor at the University of Melbourne, Australia and the Co-Chair of the Scientific Committee Breast.

- 1 There are increasingly common molecular targets between breast and lung cancer. this means we can leverage off both networks to conduct more efficient trials as well as use expertise in both tumor types.
- 2 Increased networks, pharma contacts, scientific expertise, collaborations, and diversity of thinking are strengths of the merger.
- 3 We will have an upcoming combined workshop on antibody drug conjugates which will hopefully attract new trials to IBCSG ETOP Partners Foundation.
- 4 We are energized about the influence and experiences our cooperation will bring as we see a fleet of exciting synergies and expertise sharing in the time to come.



**Solange Peters**, MD, PhD, full professor and chair of medical oncology as well as the thoracic malignancies program in the department of oncology at the University Hospital of Lausanne, Switzerland. Solange is the Chair of the Scientific Committee Thoracic.

- 1 Major innovations encountered in the field of therapeutic strategies in NSCLC also result in significant concerns regarding healthcare systems sustainability.  
  
While marketing priorities have been shaping new evidences based on industry-sponsored clinical trials, requirements for customized treatment options and a better selection of patients for each type of treatment still remain in the hands of academic researchers.  
  
Such important questions, as for example biologically-defined eligibility as well as duration and intensity of treatments need very large consortiums as well as irreproachably organized clinical trial units and collaborative groups.
- 2 The strength of the merger is mainly about sharing ideas and nurturing concepts across diseases. Both disease-oriented professional groups can parallelly benefit from the highest professionalism across all competencies needed to conceptualize, guide, follow and critically analyze clinical trials.
- 3 The high level of experience and professionalism demonstrated by the newly merged ETOP IBCSG Partners Foundation represents the first argument that will bring a large portfolio of important trials. Working across different diseases allows for flexibility and agility in the approaches taken to address scientific questions and to build clinical trials protocols.  
  
Getting to learn from other diseases enriches our perception of cancer biology and potential interventional strategies.  
  
Lastly, such a merger allows to optimize the professional environment of interprofessional employees, namely their competency, competitiveness, efficacy rentability and routine workflow.
- 4 We could already define some joint, common, research priorities. Beyond their major commercial development, we will organize a workshop on the drug-class of antibody-drug conjugates in order to better understand how to further study their indication and positioning in the treatment sequence as well as identify efficacy and resistance biomarkers.

# 2022 Australia Day Honors - AM, Members of The Order of Australia



Professor Prudence Ann Francis, Head of Medical Oncology, Breast Service, Peter MacCallum Cancer Centre, Melbourne, Australia, was awarded an AM, Members of the Order of Australia, in the 2022 Australia Day Honors by the Governor General for significant service to medical research in the field of oncology, and to education.

Australian Honors and Awards recognize the outstanding achievements, service and contributions of Australians.

We extend our sincere congratulations to Professor Prue Francis for this amazing and well-deserved honor!

# Meetings

## ETOP IBCSG Partners Foundation Strategy Meeting

On May 1 and 2, the first ETOP IBCSG Partners Foundation Strategy Meeting took place at the Zurich Airport. This get together -consisting of the Foundation Board, the Scientific Committees Breast and Thoracic as well as selected collaborators- was the kick-off for the ETOP and IBCSG representatives to get to know each other, exchange ideas and discuss the future path of the merged foundation. The topics discussed included trial and project acquisition, interactions and collaborations as well as events, funding, grants, public relations and patient advocacy.



At the ETOP Residential Workshop, Twenty-five young investigators attended the presentations of 14 leading experts in the field of thoracic oncology and statistics. They in return presented and discussed their own research projects with the faculty members.

## IBCSG Annual Meeting

- Virtual
- April 2, 2022
- 120 Participants

## ETOP Translational Research Meeting

- Zurich, Switzerland
- May 13, 2022
- 29 Participants

## 11th ETOP Residential Workshop

- Amsterdam, The Netherlands
- November 2-4, 2022
- 26 participants,  
14 faculty members

## ETOP Annual Meeting

- Amsterdam, The Netherlands
- November 4-5, 2022
- more than 100 participants



Rolf Stahel und Solange Peters at the IASCL World Conference on Lung Cancer in Vienna, take the meeting break as a welcome opportunity for discussions and exchange with Professor Ben Solomon.

### ETOP Conference Slide Decks and Live Webinars

The ETOP Conference Slide Decks, compiled by ETOP Scientific Committee members and collaborators, summarize important results of the most relevant congresses worldwide in the field of thoracic oncology (AACR, ASCO, ESMO, World Conference on Lung Cancer). They are available in English, French, Japanese and Chinese.

The Live Webinars, based on the ETOP Conference Slide Decks, present the highlights of the most important congresses in the form of short presentations and are highly appreciated also by our Asian colleagues. In 2022, two webinars took place, covering AACR/ASCO as well as ESMO/WCLC.

The Conference Slide Decks and Live Webinars can be downloaded from the ETOP website. They have been realized thanks to the kind support of Eli Lilly.



# Swiss Premiere: Cancer Survivors Day 2022 “In The Middle Of Life”

The very first Swiss Cancer Survivors Day, owned and organized by the Comprehensive Cancer Center Zurich, took place on Saturday, June 26, 2022, at the honorable location of the University of Zurich.

**ETOP IBCSG Partners Foundation** was a participating member of the Swiss premiere event from the very beginning and was invited to share the stage for the

opening lectures. Sabrina Maier, who took part in the POSITIVE study gave a very touching and captivating speech on her trial journey. Sabrina had been diagnosed with breast cancer at the early age of 29 and had the desire to start a family and have children. Despite cancer therapy, the young family’s wish came true with the birth of two amazing children. The audience rewarded her engaging and courageous story with warm applause.

In addition, a well frequented information booth was part of the engagement, mainly for the benefit of the Program for Young Patients. Anita Hiltbrunner, Monica Ruggeri and Marianne Wenger of the Coordinating Center interacted with the interested visitors which led to many lively discussions and encouragements.



Professor Rolf Stahel was the original initiator of this event while acting as the chair of the Comprehensive Cancer Center Zurich of the University Hospital of Zurich. The objective was to create an annual meeting place to celebrate life, be informed on newest treatments, exchange experiences, and have a joyous and fun time in a comforting atmosphere. More than 300 cancer survivors and their friends experienced an exciting, informative and inspiring afternoon with lectures, workshops and many other activities.



Sabrina, POSITIVE participant



Professor Rolf Stahel, Professor Claudia Witt, Professor Markus Manz and Professor Matthias Guckenberger. ©Photos USZ

# Pink Ribbon Charity Walk

More than 5000 participants gathered at the Letzigrund Stadium in Zurich on Sunday, September 25, 2022 for the 15th Pink Ribbon Charity Walk. The four kilometer walk has become an important event in the calendar of many to show their solidarity for breast cancer patients and to support the early detection of the disease. This wonderful event, accompanied by a variety of entertainment activities, has nothing to do with competition or rivalry -everybody participates at their own pace, be it jogging or even leisurely walking.

The IBCSG Pink Ladies were part of the action and were delighted to show their appreciation to Pink Ribbon Switzerland for their long-standing support to the POSITIVE study.



© PRESS PHOTO PINK RIBBON SCHWEIZ

# Pink Ribbon Golf Tour

The Pink Ribbon Golf Season 2022 started in May with the first tournament at the Golf Club Sempach, followed in June by the second at the beautiful Golfpark Zürichsee, and ended with the final championship at the Golfclub Winterberg in July.

We are again very grateful that the participation fees of the Pink Ribbon Golf Tour were dedicated to our foundation.

A highlight this year was the very touching interview with a patient and participant of the POSITIVE study who explained her journey through breast cancer to the golf ladies and underlined the importance of their ongoing support.

The PINK RIBBON SCHWEIZ organizers stated: "We are very happy to have been a sponsor of this research study for many years and are touched that so far 284 young women have been able to fulfill their wish to have a baby thanks to the study."

Monica Ruggeri, Head of the Program for Young Patients, was thrilled and thankful to receive a check of the amazing amount of 48000 Swiss Francs.



**We sincerely thank:**

PINK RIBBON SCHWEIZ, Nicole Zindel, Beatrice Wegmann and Laura Schempp of 2C Communication GmbH, Anja Flückiger and Joelle Zindel, all golfers, the Golf Club Sempach, Golfpark Zürichsee and Golfplatz Winterberg, Clarins, Bucherer Fine Jewellery, Bank Julius Bär, Focus Water as well as all the many other supporters, donors and volunteers who enabled this wonderful event.



Photos: © PINK RIBBON SCHWEIZ

## ETOP IBCSG Partners Foundation Charity Partner 2022 of the “Schweizer Frauenlauf“

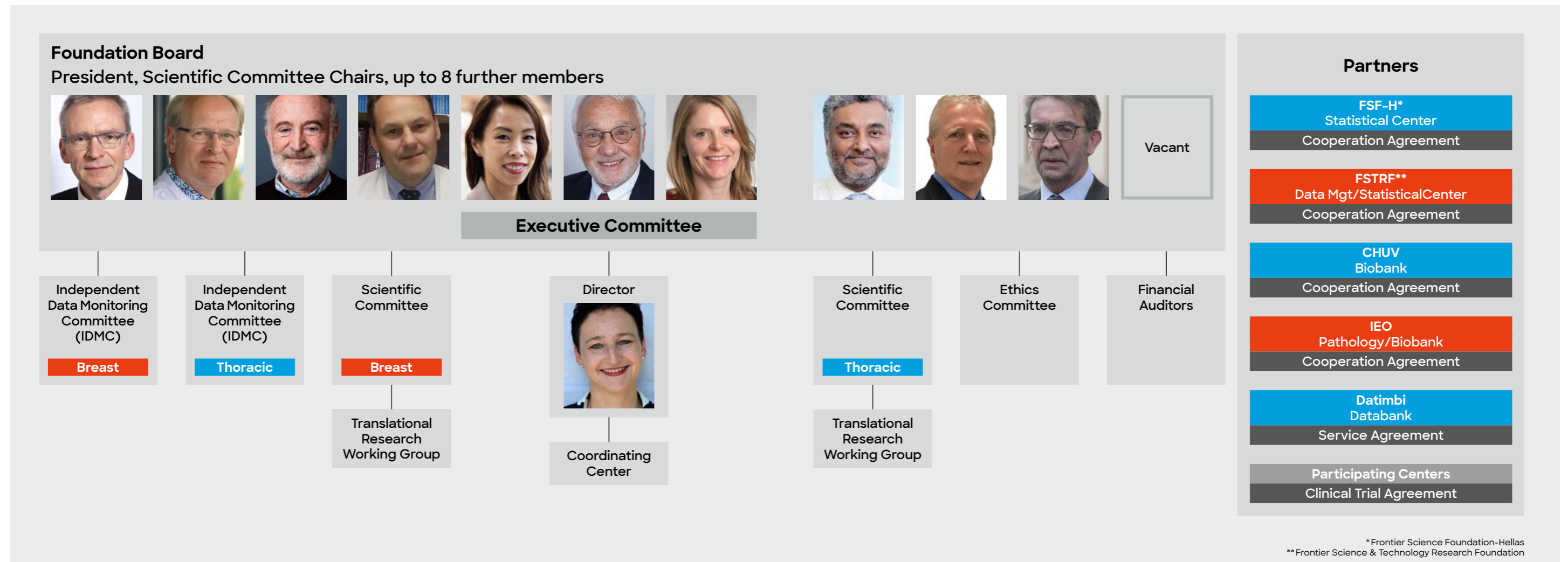
Seven thousand women runners participated in the Switzerland's 36th “Schweizer Frauenlauf” in the city of Berne. Post-pandemic, everyone was just happy to be part of this traditional event, be active and enjoy the sunny weather. As always, our 30 Pink Ladies, recognizable with their hot-pink wigs and their “Women 4 Women” T-shirts were a cool and welcome sight and attraction at this traditional run.

ETOP IBCSG Partners Foundation, Charity Partner of the “Schweizer Frauenlauf” also hosted a stand at the Bärenplatz, a lively meeting point in the old town of Berne. The stand was equipped with a photo-box, which was a major attraction and a great opportunity to raise awareness of the IBCSG research Program for Young Patients.



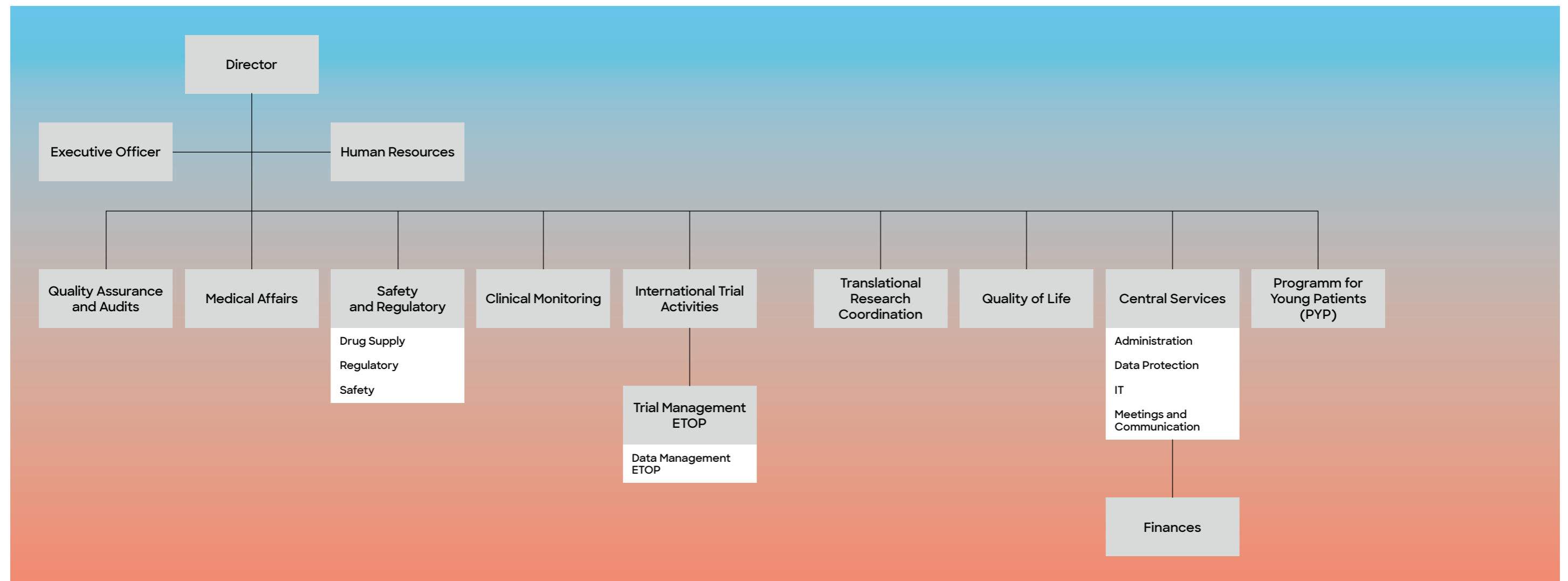
# ETOP IBCSG Partners Foundation Board

The Foundation Board is the governing body of the ETOP IBCSG Partners Foundation. Its members define the vision and values and determine the forward-looking strategy and creative platform to enable the most cutting-edge scientific research, trials and projects. In addition, the Board provides ongoing financial oversight.



# ETOP IBCSG Partners Foundation Coordinating Center

The coordinating center in Berne, Switzerland is the headquarters of the ETOP IBCSG Partners Foundation. The team consists of 46 specialized coworkers (as of December 31, 2022).



# ETOP Publications

2022

33. O'Brien M, Paz-Ares L, Marreaud S, Dafni U, Oselin K, Havel L, Esteban E, Isla D, Martinez-Marti A, Faehling M, Tsuboi M, Lee JS, Nakagawa K, Yang J, Samkari A, Keller SM, Mauer M, Jha N, Stahel R, Besse B, and Peters S. 2022. Pembrolizumab versus placebo as adjuvant therapy for completely resected stage IB-IIIa non-small-cell lung cancer (PEARLS/KEYNOTE-091): an interim analysis of a randomised, triple-blind, phase 3 trial. *Lancet Oncol* 2022; 23(10): 1274-1286. doi: 10.1016/s1470-2045(22)00518-6. Epub 2022 September 16. (ETOP 8-15 PEARLS) (Journal Impact Factor 54.433).

32. Rüschoff JH, Haberecker M, Tsourti Z, Nackaerts K, de Perrot M, Brcic L, Nadal E, Tsimpoukis S, Gray SG, Ampollini L, Aerts JG, Felley-Bosco E, Kirschner MB, Monkhorst K, Weynand B, Bavaghar-Zaeimi F, Samarzija M, Llatjos R, Finn SP, Silini E, von der Thüsen J, Marti N, Vervita K, Kammler R, Peters S, Stahel RA, Baas P, Opitz I, and for the ETOP Mesoscape consortium. Expression of phosphorylated ribosomal protein S6 in mesothelioma patients - correlation with clinico-pathological characteristics and outcome: results from the European Thoracic Oncology Platform (ETOP) Mesoscape project. *Mod Pathol* 2022; 35(12): 1888-1899. doi: 10.1038/s41379-022-01145-0. Epub 2022 September 17. (ETOP Mesoscape) (Journal Impact Factor 5.988).

31. Bubendorf L, Zoche M, Dafni U, Rüschoff JH, Prince SS, Marti N, Stavrou A, Kammler R, Finn SP, Moch H, Peters S, and Stahel RA. Prognostic impact of tumour mutational burden in resected stage I and II lung adenocarcinomas from a European Thoracic Oncology Platform Lungscape cohort. *Lung Cancer* 2022;174:27-35. doi: 10.1016/j.lungcan.2022.09.014. Epub 2022 October 26 (ETOP Lungscape) (Journal Impact Factor 6.081)

30. Felip E, Smit EF, Molina-Vila MA, Dafni U, Massuti B, Berghmans T, de Marinis F, Passiglia F, Dingemans A-MC, Cobo M, Viteri S, Britschgi C, Cuffe S, Provencio M, Merkelbach-Bruse S, Andriakopoulou C, Kammler R, Ruepp B, Roschitzki-Voser H, Peters S, Wolf J, Stahel R. Alectinib for the treatment of pretreated RET-rearranged advanced NSCLC: Results of the ETOP ALERT-lung trial. *Lung Cancer* 2022;172:94-99. doi: 10.1016/j.lungcan.2022.08.008. Epub 2022 August 12. (ETOP 12-17 ALERT-lung) (Journal Impact Factor 6.081).

29. Banna GL, Addeo A, Zygoura P, Tsourti Z, Popat S, Curioni-Fontecedro A, Nadal E, Shah R, Pope A, Fisher P, Spicer J, Roy A, Gilligan D, Gautschi O, Janthur WD, López-Castro R, Roschitzki-Voser H, Dafni U, Peters S, Stahel RA. A prognostic score for patients with malignant pleural mesothelioma (MPM) receiving second-line immunotherapy or chemotherapy in the ETOP 9-15 PROMISE-meso phase III trial. *Lung Cancer* 2022;169:77-83. doi: 10.1016/j.lungcan.2022.05.018. Epub 2022 June 7. (ETOP 9-15 PROMISE-meso) (Journal Impact Factor 5.705).

28. Dafni U, Soo RA, Peters S, Tsourti Z, Zygoura P, Vervita K, Han JY, De Castro J, Coate L, Früh M, Hashemi SMS, Nadal E, Carcereny E, Sala MA, Bernabé R, Provencio M, Cuffe S, Roschitzki-Voser H, Ruepp B, Rosell R, Stahel RA. Impact of smoking status on the relative efficacy of the EGFR TKI/angiogenesis inhibitor combination therapy in advanced NSCLC—a systematic review and meta-analysis. *ESMO Open* 2022;7(3):100507. doi: 10.1016/j.esmoop.2022.100507. Epub 2022 June 14. (ETOP 10-16 BOOSTER) (Journal Impact Factor 6.540).

27. Pérol M, Felip E, Dafni U, Polito L, Pal N, Tsourti Z, Ton TGN, Merritt D, Morris S, Stahel R, Peters S. Effectiveness of PD-(L)1 inhibitors alone or in combination with platinum-doublet chemotherapy in first-line (1L) non-squamous non-small-cell lung cancer (Nsq-NSCLC) with PD-L1-high expression using real-world data. *Ann Oncol* 2022;33(5):511-521. doi: 10.1016/j.annonc.2022.02.008. Epub 2022 February 27. (ETOP General) (Journal Impact Factor 32.976).

26. Soo RA, Han JY, Dafni U, Cho BC, Yeo CM, Nadal E, Carcereny E, de Castro J, Sala MA, Bernabé R, Coate L, Provencio Pulla M, Garcia Campelo R, Cuffe S, Hashemi SMS, Früh M, Massuti B, Garcia-Sanchez J, Dómine M, Majem M, Sanchez-Torres JM, Britschgi C, Pless M, Dimopoulou G, Roschitzki-Voser H, Ruepp B, Rosell R, Stahel RA, Peters S. A randomised phase II study of osimertinib and bevacizumab versus osimertinib alone as second-line targeted treatment in advanced NSCLC with confirmed EGFR and acquired T790M mutations: the European Thoracic Oncology Platform (ETOP 10-16) BOOSTER trial. *Ann Oncol* 2022;33(2):181-192. doi: 10.1016/j.annonc.2021.11.010. Epub 2021 November 29. (ETOP 10-16 BOOSTER) (Journal Impact Factor 32.976).

25. Peters S, Pujol JL, Dafni U, Dómine M, Popat S, Reck M, Andrade J, Becker A, Moro-Sibilot D, Curioni-Fontecedro A, Molinier O, Nackaerts K, Insa Mollá A, Gervais R, López Vivanco G, Madelaine J, Mazieres J, Faehling M, Griesinger F, Majem M, González Larrriba JL, Provencio Pulla M, Vervita K, Roschitzki-Voser H, Ruepp B, Mitchell P, Stahel RA, Le Pechoux C, De Ruyscher D. Consolidation nivolumab and ipilimumab versus observation in limited-disease small-cell lung cancer after chemo-radiotherapy - results from the randomised phase II ETOP/IFCT 4-12 STIMULI trial. *Ann Oncol* 2022;33(1):67-79. doi: 10.1016/j.annonc.2021.09.011. Epub 2021 September 26. (ETOP 4-12 STIMULI) (Journal Impact Factor 32.976).

# IBCSG Publications

2022

418. Nuciforo P, Townend J, Piccart MJ, Fielding S, Gkolfi P, El-Abed S, de Azambuja E, Werutsky G, Bliss J, Moebus V, Colleoni M, Moreno Aspitia A, Gomez H, Gombos A, Coccia-Portugal MA, Tseng LM, Kunz G, Lerzo G, Sohn J, Semiglazov V, Saura C, Kroep J, Ferro A, Cameron D, Gelber R, Huober J, Di Cosimo S. Ten-year survival of neoadjuvant dual HER2 blockade in patients with HER2-positive breast cancer. *Eur J Cancer* 2022;181:92-101. doi: 10.1016/j.ejca.2022.12.020. Epub 2022 Dec 27. (IBCSG 37-07) (Journal Impact Factor 10.002).

417. Geyer CE Jr, Garber J, Gelber RD, Yothers G, Taboada M, Ross L, Rastogi P, Cui KY, Arahmani A, Aktan G, Armstrong AC, Arnedos M, Balmana J, Bergh J, Bliss J, Delalogue S, Domchek SM, Eisen A, Elsayf F, Fein LE, Fielding A, Ford JM, Friedman S, Gelmon KA, Gianni L, Gnant M, Hollingsworth SJ, Im S-A, Jager A, Johannsson OP, Lakhani SR, Janni W, Linderholm B, Liu T-W, Loman N, Korde L, Loibl S, Lucas PC, Marme F, Martinez de Duenas E, McConnell R, Phillips K-A, Piccart M, Rossi G, Schmutzler R, Senkus E, Shao Z, Sharma P, Singer CF, Spanic T, Stickeler E, Toi M, Traina TA, Viale G, Zoppoli G, Park YH, Yerushalmi R, Yang H, Pang D, Jung KH, Mailliez A, Fan Z, Tennevet I, Zhang J, Nagy T, Sonke GS, Sun Q, Parton M, Colleoni MA, Schmidt M, Brufsky AM, Razaq W, Kaufman B, Cameron D, Campbell C, Tutt AN; Olympia Clinical Trial Steering Committee and Investigators. Overall survival in the OlympiA phase III trial of adjuvant Olaparib in patients with germline pathogenic variants in BRCA1/2 and high-risk, early breast cancer. *Ann Oncol* 2022;33(12):1250-1268. doi: 10.1016/j.annonc.2022.09.159. Epub 2022 Oct 10. (IBCSG 50-14) (Journal Impact Factor 51.769).

416. Pagani\* O, Walley\* BA, Francis GF, Colleoni M, Láng I, Gomez HI, Tondini C, Burstein HJ, Goetz MP, Ciruelos EM, Stearns V, Bonnefoi HR, Martino S, Geyer CE Jr, Chini C, Puglisi F, Spazzapan S, Ruhstaller T, Winder EP, Ruepp B, Loi S, Coates AS, Gelber RD, Goldhirsch A, Regan\*\* MM, Francis\*\* PA, for the SOFT and TEXT Investigators and the International Breast Cancer Study Group. Adjuvant exemestane with ovarian suppression in premenopausal breast cancer: long-term follow-up of the combined TEXT and SOFT trials. \*Co-lead authors. \*\*Co-last authors. *J Clin Oncol* 2022;41(7):1376-1382. doi: 10.1200/JCO.22.01064. Epub 2022 Dec 15. (IBCSG 24-02 and 25-02) (Journal Impact Factor 50.717).

415. Francis\* PA, Fleming\* GF, Láng I, Ciruelos EM, Bonnefoi HR, Bellet M, Bernardo A, Climent MA, Martino S, Bermejo B, Burstein HJ, Davidson NE, Geyer CE Jr, Walley BA, Ingle, JN, Coleman RE, Müller B, Le Du F, Loibl S, Winer EP, Ruepp B, Loi S, Colleoni M, Coates AS, Gelber RD, Goldhirsch A, Regan MM, for the SOFT Investigators and the International Breast Cancer Study Group. Adjuvant endocrine therapy in premenopausal breast cancer: 12-year results from SOFT. \*Co-lead authors. *J Clin Oncol* 2022;41(7):1370-1375. doi: 10.1200/JCO.22.01065. Epub 2022 Dec 9. (IBCSG 24-02) (Journal Impact Factor 50.717).

414. Chua BH, Link EK, Kunkler IH, Whelan TJ, Westenberg AH, Gruber G, Bryant G, Ahern V, Purohit K, Graham PH, Akra M, McArdle O, O'Brien P, Harvey JA, Kirkove C, Maduro JH, Campbell ID, Delaney GP, Martin JD, Vu T TT, Muanza TM, Neal A, Olivotto IA, BIG 3-07/TROG 07.01 trial investigators. Radiation doses and fractionation schedules in non-low-risk ductal carcinoma in situ in the breast (BIG 3-07/TROG 07.01): a randomised, factorial, multicentre, open-label, phase 3 study. *Lancet* 2022;400(10350):431-440. doi: 10.1016/S0140-6736(22)01246-6. Epub 2022 Aug 6. (IBCSG 38-10) (Journal Impact Factor 202.731).

413. Ribi K, Pagan E, Sala I, Ruggeri M, Bianco N, Oreste Bucci E, Graffeo R, Borner M, Giordano M, Gianni L, Rabaglio M, Freschi A, Cretella E, Seles E, Farolfi A, Simoncini E, Ciccarese M, Rauch D, Favaretto A, Glaus A, Berardi R, Franzetti-Pellanda A, Bagnardi V, Gelber S, Partridge AH, Goldhirsch A, Pagani O. Employment trajectories of young women with breast cancer: An ongoing prospective cohort study in Italy and Switzerland. *J Cancer Surviv* 2022. doi: 10.1007/s11764-002-01222-y. Epub 2022 June 10. (IBCSG 43-09) (Journal Impact Factor 4.062).

412. Goodwin PJ, Chen BE, Gelmon KA, Whelan TJ, Ennis M, Lemieux J, Ligibel JA, Hershman DL, Mayer IA, Hobday TJ, Bliss JM, Rastogi P, Rabaglio-Poretti M, Mukherjee SD, Mackey JR, Abramson VG, Oja C, Wesolowski R, Thompson AM, Rea DW, Stos PM, Shepherd LE, Stambolic V, Parulekar WR. Effect of metformin vs placebo on invasive disease-free survival in patients with breast cancer: The MA.32 randomized clinical trial. *JAMA* 2022;327(20):1963-1973. doi: 10.1001/jama.2022.6147. Epub 2022 May 24. (IBCSG 40-11) (Journal Impact Factor 157.3).

411. Pérez-Fidalgo JA, Criscitiello C, Carrasco E, Regan MM, Di Leo A, Ribi K, Adam V, Bedard PL. A phase 3 trial of alpelisib+trastuzumab+/-fulvestrant vs trastuzumab+ chemotherapy in HER2+ PIK3CA-mutated breast cancer. *Future Oncol* 2022;18(19):2339-2349. doi: 10.2217/fon-2022-0045. Epub 2022 Apr 25. (Special article / review) (IBCSG 62-20) (Journal Impact Factor 3.674).

410. Malorni L, Tyekucheva S, Hilbers FS, Ignatiadis M, Neven P, Colleoni M, Henry S, Ballestrero A, Bonetti A, Jerusalem G, Papadimitriou K, Bernardo A, Seles E, Duhoux FP, MacPherson IR, Thomson A, Davies DM, Bergqvist M, Migliaccio I, Gebhart G, Zoppoli G, Bliss JM, Benelli M, McCartney A, Kammler R, DeSwert H, Ruepp B, Fumagalli D, Maibach R, Cameron D, Loi S, Piccart\* M, Regan\* MM. Serum thymidine kinase activity in patients with hormone receptor positive and HER2-negative metastatic breast cancer treated with palbociclib and fulvestrant. \*Co-last authors. *Eur J Cancer* 2022;164:39-51. doi: 10.1016/j.ejca.2021.12.030. Epub 2022 Feb 13. (IBCSG 53-14) (Journal Impact Factor 9.162).

409. Bradley R, Braybrooke J, Gray R, Hills R, Liu Z, Pan H, Peto R, Dodwell D, McGale P, Taylor C, Bergh J, Swain S, Francis PA, Gnant M, Perrone F, Regan MM, for the Early Breast Cancer Trialists' Collaborative Group (EBCTCG). Aromatase inhibitors versus tamoxifen in premenopausal women with oestrogen receptor-positive early-stage breast cancer treated with ovarian suppression: Patient level meta-analysis of 7,030 women in four randomised trials. *Lancet Oncol* 2022;23(3):382-392. doi: 10.1016/S1470-2045(21)00758-0. Epub 2022 Feb 3. (IBCSG 24-02 and 25-02) (Journal Impact Factor 41.316).

408. Loi S, Salgado R, Adams S, Pruneri G, Francis PA, Lacroix-Triki M, Joensuu H, Vittoria Dieci M, Badve S, Demaria S, Gray R, Munzone E, Drubay D, Lemonnier J, Sotiriou C, Kellokumpu-Lehtinen PL, Vingiani A, Gray K, André F, Denkert C, Piccart M, Roblin E, Michiels S. Tumor infiltrating lymphocyte stratification of prognostic staging of early-stage triple negative breast cancer (Brief communication). *npj Breast Cancer* 2022;8(1):3. doi: 10.1038/s41523-021-00362-1. Epub 2022 Jan 11. (IBCSG 22-00). (Journal Impact Factor 7.519).

# Annual Financial Statement

## 31.12.2022

### Balance

Assets	31.12.22	31.12.21
	TCHF	TCHF
Cash	7 249	12 001
Financial assets short-term	1 087	102
Accounts receivable	2 717	907
Other short-term receivables	557	346
Prepaid expenses and accrued income	888	1 794
<b>Current assets</b>	<b>12 498</b>	<b>15 150</b>
Financial assets	9 780	11 892
<b>Non-current assets</b>	<b>9 780</b>	<b>11 892</b>
<b>Total assets</b>	<b>22 278</b>	<b>27 042</b>
Liabilities	31.12.22	31.12.21
	TCHF	TCHF
Accounts payable	392	383
Advance payments short-term	14 334	17 921
Other short-term liabilities	89	121
Accrued expenses and deferred income	1 469	1 850
<b>Short-term liabilities</b>	<b>16 284</b>	<b>20 275</b>
Advance payments long-term	302	528
<b>Long-term liabilities</b>	<b>302</b>	<b>528</b>
Dedicated Fund Support Breast Cancer Clinical Research	1 024	1 024
<b>Dedicated funds</b>	<b>1 024</b>	<b>1 024</b>
Foundation capital	175	175
Voluntary retained earnings		
Profit brought forward	5 040	4 919
Loss/profit for the year	-547	121
<b>Equity</b>	<b>4 668</b>	<b>5 215</b>
<b>Total liabilities and equity</b>	<b>22 278</b>	<b>27 042</b>

### Income statement

	31.12.2022	1.7.-31.12.2021
	TCHF	TCHF
Research contributions	11 409	5 511
Grants and donations/Income from other research organizations	3 545	2 191
Other contributions	195	145
Reimbursements from externals for services	60	33
<b>Operating income</b>	<b>15 209</b>	<b>7 880</b>
Research contributions to members/sites and suppliers	-7 462	-4 199
Cooperation expenses	-239	-117
Personnel expenses	-5 039	-2 374
Other operating expenses	-787	-433
<b>Operating expenses</b>	<b>-13 527</b>	<b>-7 123</b>
<b>Operating result</b>	<b>1 682</b>	<b>757</b>
Financial income	123	86
Financial expenses	-2 352	-722
<b>Loss/profit for the year</b>	<b>-547</b>	<b>121</b>

The statutory auditor KPMG AG has examined the financial statements (consisting of balance sheet, income statement and notes) for the year ended 31. December 2022 and recommended their approval to the board of trustees.

# We Say Thank You...

Thank you



...to all patients who have participated or are still participating in our trials, as well as to their families and caregivers. You are at the very core of all our clinical trials.

...to all investigators and their teams at participating hospitals, as well as our partner organizations, for their important commitment. Without their great support, we would not be able to conduct our studies.

...to all members of our Foundation Board, the two Scientific Committees, our Study Chairs, the two Independent Data Monitoring Committees (IDMC) and the Ethics Committee. They lay the foundation for our research through their vision, knowledge and ideas.

...to all of our donors who contribute significantly to the funding of our projects and to all of our pharmaceutical partners who underwrite the majority of many study budgets.

...to all of the coworkers of the Etop IBCSG Partners Foundation Coordinating Center in Berne (Switzerland), the Statistical Centers in Boston (USA) and Athens (Greece), the Data Management Center in Amherst (USA), and the teams at the Central Laboratories in Milan (Italy) and Lausanne (Switzerland). Their expertise and commitment are crucial to the success of our studies.

# List Of Our Donors

- Anna dai capelli corti
- Baillet Latour Fund
- Bärbel und Paul Geissbühler Stiftung
- Breast Cancer Research Foundation
- Breast International Group BIG
- C&A
- Fondazione Umberto Veronesi
- Frontier Science & Technology Research Foundation, Southern Europe (FSE)
- Schweizer Frauenlauf Bern
- Gateway for Cancer Research
- Krebsforschung Schweiz
- Krebsliga Schweiz
- Piajoh Fondazione di Famiglia
- PINK RIBBON SCHWEIZ
- Rising Tide Foundation for Clinical Cancer Research (RTFCCR)
- San Salvatore Foundation
- Stiftung St. Gallen Oncology Conferences (SONK)
- Swiss Cancer Foundation
- USZ Foundation
- Verein Bärigüf
- Supporting companies in the research- based pharmaceutical industry and many other private companies and individuals

## ETOP IBCSG

### Partners Foundation

Effingerstrasse 33

3008 Bern

Switzerland

+41 31 511 94 00

contact@etop.ibcsg.org

www.etop.ibcsg.org



ETOP IBCSG Partners Foundation



@etop\_ibcsg



**We appreciate your donation**

UBS IBAN CH550023523544408840E

For reasons of legibility, the masculine form has been chosen in the text; nevertheless, the information refers to members of all genders.

